



## Synthesis and Application of Tamarind 4-Amino Butyric Acid (TABA) For Removal of Heavy Metalions from Industrial Effluent's

RENU JOSHI\*, SUNITA GAUR and ARESH VIKRAM SINGH

Department of Chemistry, Jai Narain Vyas University, Jodhpur, 342001, India.

\*Corresponding author E-mail: reujoshi5000@gmail.com

<http://dx.doi.org/10.13005/ojc/390428>

(Received: June 09, 2023; Accepted: August 17, 2023)

### ABSTRACT

4-Aminobutyric acid(TABA), a functional group that is incorporate in tamarind kernel powder to synthesized of TABA resin in laboratory. By employing batch approach and column separation experiment, their adsorption behavior for hazardous metal ion as Fe(II), Cr(III) and Cu(II) has been discovered. Various physiochemical properties as Ion exchange capacity, bulk density, SEM, and FTIR spectra were used to characterize the tamarind-based TABA resin. Industrial effluents which contaminated with heavy toxic metal ions are extracted using TABA resin. This paper emphasis that, the resin is used to remove heavy metal ions like Fe(II), Cr(II), and Cu(II) from aqueous solution and effluents of steel industry, Jodhpur. This paper present the highest% adsorption of Fe(II) metal ion and binary separation of Cr(III) and Cu(II) ions on TABA resin at pH 6. Maximum ion exchange capacity was found 3.38 mili mol/g and adsorption is 70.43% on TABA resin.

**Keywords:** Wastewater, Hazardous metal ions, contamination, ion exchange capacity, TABA resin and distribution coefficient.

### INTRODUCTION

Water contamination due to the dumping of heavy metals continues to be a major concern round the world. The treatment of unclean business waste water consequently continues to be a supply of world situation because waste reclaimed water from municipalities, communities, and enterprise need to finally be back to receiving or the land<sup>1</sup>.

Diverse commercial waste waters, inclusive of those produced by means of steel plating operations, mining companies, battery production

strategies, paint and pigment manufacturers, as well as the ceramic and glass industries, can comprise heavy metal infection. Cd<sup>+2</sup>, Pb<sup>+2</sup>, Zn<sup>+2</sup>, Ni<sup>+2</sup> and Cr<sup>+2</sup> are extensively found in business waste water<sup>2</sup>. When unsafe heavy metals are launched into the environment, steel ions can input people's bodies immediately or not directly thru food.

As a result, heavy metals need to not be allowed to enter the natural surroundings<sup>3</sup>. Chemical precipitation, coagulation, ion trade, solvent extraction, filtering, evaporation and membrane techniques<sup>4</sup> have all been used to do away with hazardous heavy metals from water systems.



**Effect of Heavy Metal Polluted Industrial Effluent**

When released into the environment, untreated wastewater containing toxic heavy metals reasons a whole lot of fitness and environmental troubles. The most harmful heavy metals consist of the ones like copper, nickel, and chromium which can be poisonous to human fitness. Fish and aquatic flowers are immediately impacted by using heavy metals considering the fact that they are extremely soluble in liquid environments and are therefore without difficulty absorbed via living things.

As those species pass up the food chain, people emerge as the very last clients and our our bodies begin to gather huge concentrations of heavy metals. Even even as heavy metals are sometimes essential for human health, ingesting them at uncontrolled ranges can have fundamental negative results on our health. For instance, if ate up in big doses, arsenic is a dangerous detail that could result in cancer, organ damage, stunted increase, or even loss of life. Heavy metals like lead or mercury can cause autoimmunity, a circumstance wherein the frame's immune system attacks its personal cells.

This also reasons fundamental health conditions like kidney failure, arthritis, and nervous system disintegrate, and mind failure in the foetus of a pregnant woman. In reality, developing youngsters honestly consume large concentrations of heavy metallic thru ingestion than adults due to the fact they eat extra and soak up extra from their food on the way to gain weight even as they are growing, Arsenic, for instance, is a risky substance which can purpose cancer, organ harm, stunted increase, and even loss of life if consumed in huge quantities. A sickness called autoimmunity, wherein the body's immune system destroys its own cells, can be delivered on via heavy metals like lead or mercury.

This results in critical fitness troubles for the unborn toddler of a pregnant mom, inclusive of kidney failure, arthritis, frightened machine damage, and mind failure. Due to the truth that developing youngsters devour and soak up more in their food so one can benefit weight than adults, children sincerely consume a higher concentration of heavy metals than adults.

According to a examine, heavy metals in business effluent represent a substantial risk to the soil and the vegetation that develop there. When

humans or animals eat these polluted plants, the heavy metals can then input the meals chain and reason considerable damage<sup>5</sup>.

Kidney failure is regularly caused by heavy steel ion overdoses from veggies or land-grown end result that builds up in the kidneys.

For instance, high copper concentrations in water our bodies, especially drinking water, can lead to anemia, vomiting, diarrhea, and in extreme instances, kidney and liver harm, no matter the truth that copper is a vital nutrient for people. Copper toxicity has been connected to gastro-intestinal problems, hepatotoxic results, and nephron poisoning<sup>6</sup>. Copper's excessive toxicity reasons irritation of the primary fearful device, as well as damage to blood capillary mucosa.

**Toxicity of heavy metal ions**

Heavy metals, similarly to posing huge dangers to people, additionally directly harm soil ecosystems because of their toxicity. Plants developing in polluted soils may additionally enjoy slowed increase, photosynthetic inhibition, decreased chlorophyll manufacturing, and reduced enzyme hobby. Heavy metals in excessive concentrations within the soil impair plant vitamins absorption, metabolic sports, chlorosys, and other procedures. Additionally, the great of receiving water our bodies, consisting of rivers and seas; will be impacted through heavy metal-polluted commercial effluent. This impact varies and is largely based on the chemical composition of the effluent launched via industries<sup>7</sup>.

In aquatic ecosystems, dissolved heavy metals reduce the dissolved oxygen degree, ensuing in a drop in aquatic population<sup>8</sup>.

In current years, there was a lot of interest in the removal of risky heavy steel ions from sewage, business, and mining waste effluents<sup>9</sup>.

It turned into found that their presence in lakes and streams produced a wide range of health troubles in animals, flora, and people. Due to their bioaccumulation, non-biodegradability, and carcinogenic characteristics<sup>10</sup>.

**Cadmium toxicity:** Cadmium can be present in electroplating wastewater, nickel manufacturing,

cadmium batteries, fertilizers, insecticides, pigments and dyes, and textile activities<sup>11,12</sup>.

It has a prolonged existence cycle inside the food chain and isn't biodegradable. At 15 mg Cd<sup>2+</sup>/L in humans, nausea and vomiting were visible, whereas at zero.05 mg Cd<sup>2+</sup>/L there were no terrible effects. There had been reviews of severe toxic however non-deadly signs at cadmium concentrations of 10–326 mg Cd<sup>2+</sup>/L.

**Copper toxicity:** A high fever is normally present with excessive ingestion of copper, which causes some of acute and chronic ailments in humans, along with hemochromatosis, gastrointestinal catarrh, clavicular cramps, and skin rashes brass chills<sup>13,14</sup>. Some of the biggest assets of copper in waste water encompass pulp and paper mills, fertilizers, petroleum refineries, primary metal paintings foundries, nonferrous metal industries, motors, and air craft plating and finishing<sup>15-17</sup>.

#### Nickel poisoning

Even in very low quantities, nickel(II) may be located within the mining, electroplating, pigments, and ceramics sectors, as well as inside the manufacturing wastes from batteries and accumulators<sup>18</sup>. Nickel is toxic to a number of aquatic life. The Environmental Protection Agency (EPA) units a restriction of 0.04 mg/L for nickel in ingesting water because lung and nasal sinus cancer are the maximum not unusual destructive health results of nickel<sup>19</sup>.

**Toxicity of Iron:** Iron is a crucial element in lots of soils, specially clay soils wherein it's far commonly a widespread component. The United States Geological Survey (USGS) reviews that the amount of dissolved iron in Iowa's ground water can variety from much less than 1 mg/L to more than 20 mg/L (USGS Ground Water Monitoring Data).

Both domestic and business water resources include an unpleasant substance referred to as iron. When iron is laundered, it can discolour garb and plumbing substances and exchange the flavor of beverages. The EPA Red Book<sup>20</sup> promoted a 0.3 mg/L widespread for iron in ingesting water.

Even though diffused iron is extra bioavailable and toxic to aquatic life, particle iron, when suspended in water, can be dangerous to

fish and other aquatic lifestyles. Particulate iron can shape flocculants at the bottom of streams, killing bottom-dwelling organisms, plant life, and fish eggs that are incubating. Therefore, the whole iron requirement of 1 mg/L is implemented.

#### Ion exchange adsorption technique

Ion change reactions do away with dissolved elimination from aqueous solution and update them with different identically charged ions in a reversible chemical response. It is usually used for water softening in water remedy, in which Water, however, is depleted of calcium and magnesium ions. Other dissolved ionic species are increasingly being removed via ion change techniques.

#### Back ground

The ion alternate phenomena are a completely vintage incidence. This prevalence was first found numerous hundreds of thousands of years ago in many parts of the world. The earliest references can be observed inside the Bible, in which Moses is credited with performing an ion exchange method to transform brackish water into potable water and Aristotle with coming across that saltwater loses some of its salt content when percolated thru positive sand. Ancient Egyptians, Greeks, and Chinese people used soils, sands, natural zeolites, and flowers as equipment for improving the first-class of the water, desalting, and softening without having a systematic knowledge of the phenomenon<sup>21,22</sup>.

There are guidelines inside the Bible and historical Greek resources that the historic Greeks knew how to desalt brackish water via ion change. It wasn't until the early 1900s that the primary reputable studies at the mechanism of ion exchange become posted. In 1850, Harry Thompson and John Way, two agricultural chemists, combined a soil pattern with a liquid fertilizer answer that contained ammonia. The soil absorbed the ammonia even as discarding the calcium<sup>23,24</sup>.

They said a number of vital observations in their reviews to the Royal Agricultural Society, which function a basis for information the ion exchange mechanism.

1. In soil, ion trade entailed the interchange of similar ions.
2. Some ions interchange extra easily than

- others.
3. The aluminum silicates in the soil supplied it with change properties.
  4. Ion exchange was not the same as actual physical absorption.

In 1858, German chemist Eichorn verified that ion change procedures in soil are reversible<sup>25</sup>. In 1876, Lemberg mounted the reversibility of the system and predicted its stoichiometry. The implementation of ion exchange for sensible methods commenced at the flip of the 20<sup>th</sup> century. Dr. Gans of Germany changed into the primary to apply an ion change (processed natural zeolite) on a big scale, based totally on the clinical expertise and technological maturity. In 1905, he commercialized a technique of softening water (through replacing magnesium and calcium ions for sodium ions) the usage of cation alternate materials.

Gans hired cation exchangers fabricated from artificial sodium aluminosilicates, which he dubbed zealots<sup>26</sup>. Around hundred years ago, a Swedish geologist named Gonstedt coined the time period zeolites to describe clearly produced siliceous minerals that have become dehydrated whilst heated. The word zeolite comes from the Greek words zein and lithos, which imply "boiling rock" in English. Although real sodium aluminosilicates minerals at the moment are every so often applied, the phrases zeolite and sodium zeolite softener are nevertheless extensively used today. In 1913, the Permutt Company brought the first synthesized zeolites to the American market.

In 1917, Follin and Bell<sup>27</sup> used a artificial zeolite to accumulate and separate ammonia from urine for the primary time. Strong proponents of ion change, however, originated from the industrial facet, no longer the scientific community.

### Polysaccharides

Polymeric carbohydrates referred to as polysaccharide molecules are composed of lengthy chains of monosaccharide units connected by means of glycosidic linkages, which, upon hydrolysis, launch monosaccharide. They may have linear or appreciably branched structures, amongst others.

Polysaccharides are often heterogeneous, with functional organizations which have been

somewhat changed. Polysaccharides are modified to get a mix of features which can be appropriate for a sure software and to boom their versatility.

Ion exchange method<sup>28-33</sup> has acquired numerous interests lately and has emerged as one of the most popular techniques for eliminating heavy metals from business effluent. A strong and insoluble matrix is required for green adsorption, and newly invented polysaccharide substances have been shown to be such materials<sup>34</sup>.

The fictionalization of a polysaccharide matrix with exclusive chelating features has been used to demonstrate the removal of metallic ions from aqueous answer<sup>35,36</sup>. Utilizing chelating ion trade resins for metallic ion adsorption is a green system.

It is a great analytical strategy since it avoids the use of heavy chlorinated natural solvents, which are regularly utilized in traditional liquid-liquid extraction strategies and different procedures. Polysaccharides, which might be hydrophobic functionalized polymers, have been the focal point of research on cation and anion exchange resin. These resins provide a extensive range of operating conditions as well as accurate metallic ion stability. Polysaccharide-based resins are gaining popularity. Higher selectivity in compared to other polymers due to the fast adsorption of metallic ions.

## MATERIALS AND METHODS

### How is Tamarind Kernel Powder made

Tamarind seed powder is created as a byproduct of tamarind seed processing, which incorporates the following steps:

- **Harvesting:** The mature tree's pods or kernels are harvested once they attain maturity.
- **Sorting:** The seeds are removed from the harvested pods with the aid of breaking them apart and removing rotten seeds, debris, and stones, while preserving the brilliant seeds.
- **Roasting:** The wholesome seeds are heated, causing the seed coat to emerge as brittle while having little have an effect on on the endosperm.
- **Stripping:** After the seed coats have been roasted, it is simple to separate the

endosperm from the seed coats the usage of a system referred to as stripping.

- **Grinding:** The endosperm is beaten or powdered to create tamarind kernel powder after being separated from the germ.
- **Screening:** To make tamarind gum powder, additionally called goma tamarind in Spanish, the tamarind seed powder is first screened over again to provide a quality powder. This great powder is then combined with a solvent.

Chemical composition and structure of Tamarind kernel powder, the supply of gum, replicates cereals with 12.7-15.4 percent protein, 3-7.5 percentage oil, 7-8.4 percent crude fiber, 61-72.2 percent carbohydrates, and 2.45-3.3 percentage ash. On a dry weight basis, all calculations had been made<sup>37</sup>. In phrases of chemistry, tamarind kernel powder is a branched chain carbohydrate polymer.

The predominant components of TKP, a polymer with a mean molecular weight of 52350 Daltons, are glucose, galactose, and xylose in a 3:2:1 molar ratio. A polymer is made of a cellulose-like spine with xylose and galactoxylose substituents. Xylose (1-6 linked) residues take the place of about eighty% of the glucose residues, and p-1-2 galactose replaces the ultimate 20%.

### Synthesis of tamarind 4-aminobutyric acid (TABA) resin preparation of epoxypropyl ether of 4-aminobutyric acid

5.1 g of butyric acid (0.1 mole) was dissolved in minimum amount of methanol in a round bottom flask. 9.25 mL (0.10 mole) of epichlorohydrine was added in the above solution and reaction mixture was stirred for 4 h on magnetic stirrer. 4 g of sodium hydroxide (0.1mole) was added in reaction mixture and reaction mixture was further stirred for 5 h on magnetic stirrer and left it overnight.

Preparation of tamarind 4-amino butyric acid resin In a round bottom flask, 81 g of tamarind (0.5 mole) was combined with dioxane and 4 g (0.1mole) NaOH solution added and stirred on magnetic stirrer at 65°C. After this, butyric acid was added and mixture was stirred continuously for 4.5 h at 65°C. After being washed with methanol and HCl to remove any remaining inorganic impurities and to neutralize any excess alkali. Tamarind 4-amino butyric acid resin has a 116 gram yield.

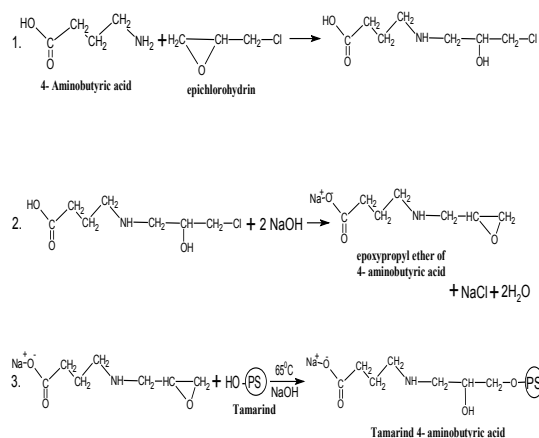


Fig. 1. Reaction scheme of TABA resin synthesis

### Preparation of Fe(II) stock solution

The stock solution of Fe(II) metal ion was ferrous ammonium sulphate ( $\text{NH}_4)_2\text{Fe}(\text{SO}_4)_2 \cdot 6\text{H}_2\text{O}$ . To make 1000ppm Fe(II) solution, 7.02 g ferrous ammonium sulphate was mixed in 2 mL con.  $\text{H}_2\text{SO}_4$  and the capacity were increased to 1000 mL.

### Physicochemical characterization

Newly synthesized cellulose and tamarind based resin are characterized by various methods as follows:

#### Absorbance of iron metal ion

Table 1: Absorbance of iron metal ion

S.No	Conc.(ppm)	Absorbance
1	2ppm	0.123
2	4ppm	0.222
3	6ppm	0.323
4	8ppm	0.434
5	10ppm	0.555
6	12ppm	0.676
7	16ppm	0.785
8	18 ppm	0.896

#### CALIBRATION CURVE OF ABSORBANCE OF IRON METAL ION

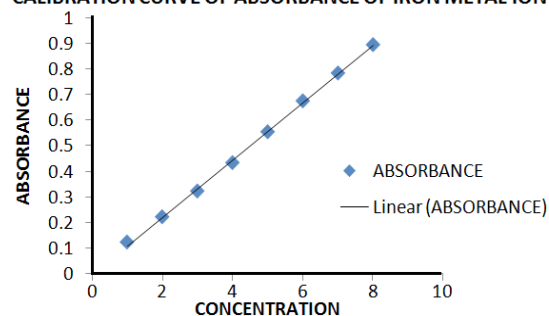


Fig. 2. Calibration curve of absorbance of iron

### SEM Characterization of TABA resin

SEM micro graphs of surface of synthesized ion exchange resin (TABA) were presented in following Fig. 3. show that resin spresent the Cavities to the level of their surface area. Surface show heterogeneity and varied structures. The adsorbent is porous in nature. Surface of resin show heterogeneity and varied structures. The adsorbent is porous in nature.

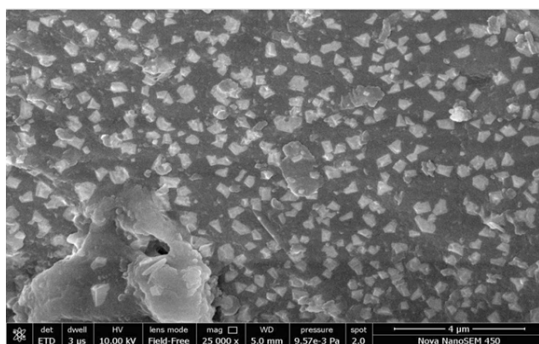


Fig. 3. SEM Characterization of TABA

### Ftir spectra of TABA resin

The characteristics bands observed in the FTIR spectra of TABA resin as 3276 cm<sup>-1</sup> due to OH group and hydrogen bond, 3011 cm<sup>-1</sup>, 2937 cm<sup>-1</sup> due to carboxylic acid group, -NH<sub>2</sub> group show at 1900 cm<sup>-1</sup> and 1572 cm<sup>-1</sup>, 1428 cm<sup>-1</sup>, 1338 cm<sup>-1</sup>, 1170 cm<sup>-1</sup> due to asymmetric and symmetric stretching.

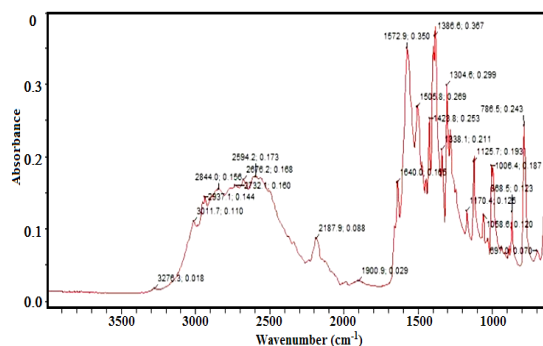


Fig. 4. FTIR of TABA resin

### Deter mination of moisture content of TABA resin

In a crucible, 1.0 g of dry resin was placed and dried to a consistent weight in a vacuum desiccator at 80°C for 24 hours. The resin was then weighed, yielding the following result.

The weight of dry resin = 0.88 Weight of the moisture=0.12% Moisture contain = 12%

### Ion exchange capacity of TABA resin

The total amount of charge or active ion

groups per unit weight of material determines the resin's ion exchange capacity. The ion exchange capacity of the exchanger increases as the number of active ions increases. In milli moles per g of exchanger, the total ion exchange ability (IEC) of resin is stated.

The number of milli-moles of sodium ion absorbed by 1 g of dry resin in hydrogen form can be used to determine a cation exchanger's ion exchange capacity in the lab. The quantity of Cl- ion taken up by 1 g of dry polymer in the OH- form is used to determine the anion exchange capacity of the anion exchanger.

Large ions may not be assimilated by moderate cross-linked.

### Process

The resin capacity was determined using a back titration process. In an Erlenmeyer flask, 1.0 g of resin was placed and 200 mL of standardized NaOH (0.05N) containing 5 mL of 5% NaCl solution was then added and allowed to stand overnight. Using indicator, a 25 mL aliquot of supernatant liquid was back titrated with 0.05N HCl standard solution (phenolphthalein). The formula was used to compute the ion exchange ability of the newly synthesized resin.

$$Q (\text{Meq/g}) = \frac{(0.05N \times V1) - 8(0.05N \times V2)}{M}$$

V1 volume of 0.05N NaOH (mL)

V2 Volume of 0.05N HCl (mL)

M Weight of dry resin (g)

$$\begin{aligned} Q(\text{Meq/g}) &= (0.05 \times 200) - 8(0.05 \times 14.66) / 0.88 \\ &= 10 - 8(0.728) / 0.88 \\ &= 10 - 8(0.728) / 0.88 \\ &= 3.38 \end{aligned}$$

### Nitrogen content in TABA resin

The Kjeldahl's method was used to estimate the amount of nitrogen in newly produced resins.

### Procedure

In a dry kjeldahl's flask, 0.25 g of resin was added, along with 10 mL con. H<sub>2</sub>SO<sub>4</sub> (18N), 0.5 g of catalyst (homogeneous mix of 5 g metallic selenium, 120 g CuSO<sub>4</sub>, and 150 g potassium sulphate). The mixture was heated or boiled until it became transparent, then left to cool for 2 hours. The solution was chilled and transferred to a distillation device with 30 mL of distilled water for ammonia

measurement. After adding 12 mL of 10N NaOH, the flask's total capacity was increased to 75 cm<sup>3</sup>. Ammonia-free steam was distilled for 5 min in a receiver holding 5 cm<sup>3</sup> of 4% boric acid and 5-6 drops of indicator (75 g of bromocresol green and 50 g of methyl red diluted in 100 g of ethanol). 0.05M HCl was used to titrate the distilled ammonia.

1 mL of 0.05NHCl = 0.7003 mg of NA moun  
to fresin = 0.25 g

Volume of 0.05NHCl = 6.9x0.7003=4.83 =  
4.83 mg N/0.25 gresin = 1.93%

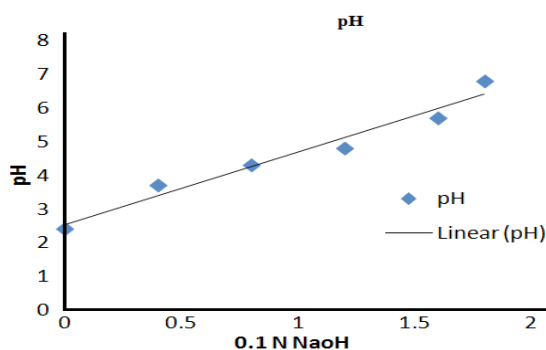
### pH Titration of TABA resin

The tamarind derivative products were first converted to H<sup>+</sup> ion form, then rinsed with water in order to remove excess acid, and dried overnight at 55-60°C. 0.1 g of resin was obtained from each and placed in one of seven flasks, with a reducing amount of 1 N NaCl solution and an increasing amount of 0.1N NaOH added to each flask. Finally, de-ionized water was added to each flask to make the total capacity of each flask 25 mL.

The magnetic stirrer was used to equilibrate all firmly closed flasks until the solution reached the final pH value. The pH value from each was determined using a digital pH meter, and the results are listed in the table below. pH vs. meq of alkali/g of resin curve was plotted for each resin.

**Table 2: pH titration of tamarind 4-aminobutyric acid (TABA) resin**

Flask No.	0.1N NaOH(mL)	1M NaCl(mL)	deionized water(mL)	pH
1	0.0	3.2	20.9	2.4
2	0.4	3.1	20.6	3.7
3	0.8	2.5	20.2	4.3
4	1.2	1.8	19.9	4.8
5	1.6	1.5	19.5	5.7
6	1.8	1.1	19.2	6.8



**Fig. 5. pH titration curve of TABA resin**

### Observation

#### Distribution coefficient

The following formula was used for calculating the distribution coefficient:

$$K_d = \frac{\text{Amount of metal ion in resin phase} / \text{Amount of dry resin in mg}}{\text{Amount of metal ion in solution phase} / \text{Volume of solution in ml}}$$

#### Method of batch

There sins were placed in as topper conical flask with 1.0 mL per liter analyze (equal to 1.0mg metal ions) and an adequate buffer volume for pH adjustment throughout the batch operation. In a temperature-controlled shaker, the mixture was shaken continuously for 4-5 h at 24-30°C, and the containments were equilibrated. To filter the solution, what man filter paper no. 40 or 42 was used.

The mixture was filtered by what man filter paper no. 42 after the residual on the filter paper was equilibrating with 4N HCl. A Perkin-Elmer model 2380 atomic absorption spectrophotometer was used to calculate the amount of hazardous metal ions in the filtrates and residue.<sup>38</sup> By examining a number of standard solutions of different metal ions using AAS, the calibration curve for distinct metal ions was plotted.

$$\text{Adsorption\%} = (C_i - C_f) / C_i \times 100$$

In this formula, C<sub>i</sub> stands for the metal ion's initial concentration in solution and C<sub>f</sub> for the metal ion's final concentration in solution once the resin is in equilibrium.<sup>39</sup> Plots were made of the calibration curves for various metal ions.

#### TABA resin chelation of Fe(III) metal ion

To generate buffers with the required pH range of 2 to 8, applicable quantities of M sodium acetate and 0.2 M acetic acid were added to numerous glass stopper conical flasks. Other glass stopper conical flasks received a suitable amount of 0.2M NH<sub>4</sub>OH and 0.1 M NH<sub>4</sub>Cl to achieve a pH of 8.0. Each flask was filled with 0.070g dry TABA resin and 1 mL Fe(III) solution at 1000ppm. After 1 h of magnetic stirrer equilibration, the contents were filtered. AAS was used to determine the iron concentration of the filtrates. The findings are summarized in Table 3.

**Table 3:  $K_d$  value of iron metalion on TABA resin**

pH	Absorbance	Concentration(ppm)	Metal ion in filtrate(mg)	Metal ion in resin(mg)	$K_d$	%absorbance	IEC(mg/g)
1	0.543	8.67	0.311	0.6889	2672.90	68.89	9.12
2	0.435	8.55	0.301	0.6990	2634.90	69.90	9.34
3	0.213	6.89	0.301	0.6998	2546.87	69.98	9.56
4	0.112	6.97	0.2989	0.7011	2343.89	70.11	9.89
5	0.034	6.65	0.2957	0.7043	3112.89	70.43	10.23
6	0.045	7.89	0.299	0.7010	2786.34	70.10	10.11
7	0.321	7.998	0.299	0.7001	2676.45	70.01	9.78

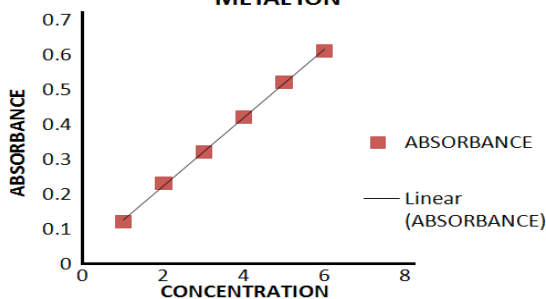
**Binary seperation of Cu(II) and Cr(III) mixtures using taba resin**

Metal ions are removed from solutions through ion exchange. The majority of ion exchange operations take place in a column. We attempted to separate a combination of inorganic metal ions on resin using the distribution coefficient values acquired by batch technique at various pH levels. A glass tube with an internal diameter of 1.6 cm is inserted into the column. DMF was used to swell the resin. To make a homogenous layer, the swelling resin was allowed to settle<sup>40</sup>. The height of the column was about 4-5 cm, and the resin utilised was roughly 5.0 gram.

**Table 4: Absorbance of copper metal ion**

S. No	Concentration	Absorbance
1	2	0.122
2	3	0.232
3	4	0.322
4	5	0.422
5	6	0.522
6	7	0.612

**CALIBRATION CURVE OF ABSORBANCE COPPER METAL ION**

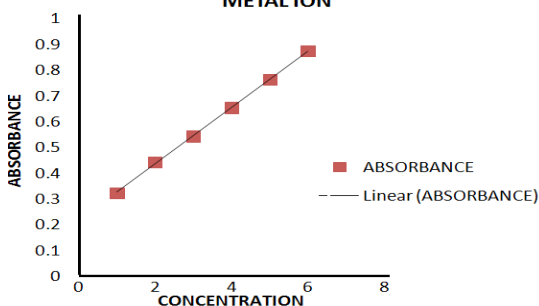


**Fig. 6. Calibration curve of copper metal ion**

**Table 5: Absorbance of chromium metal ion**

S.No	Concentration	Absorbance
1	2	0.323
2	3	0.443
3	4	0.543
4	5	0.654
5	6	0.763
6	7	0.874

**CALIBRATION CURVE OF ABSORBANCE OF CHROMIUM METAL ION**



**Fig. 7. Calibration curve of chromium metal ion**

**Table 6: Concnetration of copper metal ion**

S. No	Volume of eleunt	absorbance	concentration
1	2	0	0
2	3	0	0
3	4	0	0
4	5	0.11	0.056
5	6	0.12	0.054
6	7	0.23	0.778
7	8	0.33	1.66
8	9	0.15	1.56
9	10	0.023	1.44
10	11	0.22	0.87
11	12	0	0.33
12	13	0	0

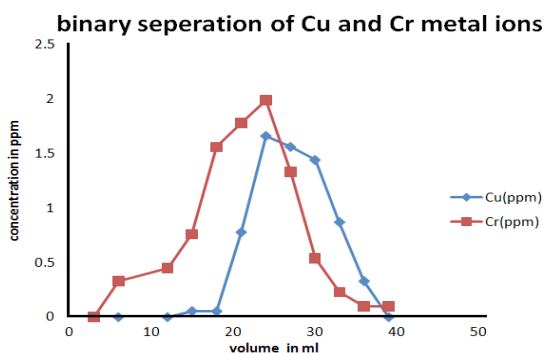
**Table 7: Concentration of chromium metal ion**

S. No	Volume of eleunt	absorbance	concentration
1	2	0	0
2	3	0.002	0.33
3	4	0.003	0.45
4	5	0.675	0.76
5	6	0.777	1.56
6	7	0.876	1.78
7	8	1.233	1.99
8	9	0.055	1.33
9	10	0.342	0.54
10	11	0.11	0.23
11	12	0	0.1
12	13	0	0.1



**Table 8: Binary separation of mixture of copper and chromium metal ion on TABA resin**

Volume(mL)	Cu(ppm)	Cr(ppm)
3	0	0
6	0	0.33
12	0	0.45
15	0.056	0.76
18	0.054	1.56
21	0.778	1.78
24	1.66	1.99
27	1.56	1.33
30	1.44	0.54
33	0.87	0.23
36	0.33	0.1
39	0	0.1

**Fig. 8. Binary separation of Cu and Cr metal ion on TABA resin**

## RESULTS

Fe(III) metal ions have a molar distribution coefficient of 3112.89 with TABA resin and a percentage absorbance of 70.43 at their maximum pH of 6. Chromium metal ion exhibits greatest% removal as compared to copper in binary separation of two metal ion like copper and chromium on TABA resin.

## DISCUSSIONS

To investigate the effects of pH on metal ion adsorption, the pH was changed from 2.0 to 8.0. Free metal ion absorption is pH-dependent, with optical heavy metal adsorption<sup>41-43</sup> beginning at pH 6 and decreasing

as pH rises. When the pH was raised from 2.0 to 6.0, metal ion adsorption on TABA resin increased.

The adsorption of metal ions on TABA resin improved when the contact time was increased from 20 to 120 minutes. Other variables including the pH of the solution and the spinning speed were kept at optimal values, while the temperature was fixed at 250 degrees Celsius. The findings reveal that heavy metal adsorption occurs in two stages: one in which the rate of adsorption% is very high (56 to 75 percent of heavy metals adsorbed on TABA resin in 60 min) and the other in which the rate of adsorption% is very low (56 to 75 percent of heavy metals adsorbed on TABA resin in 60 minutes). After then, there is a second stage with a much lower adsorption rate. TABA resin is treated at temperatures ranging from 25 to 60 degrees Celsius.

## CONCLUSION

Heavy metal ion removal from industrial effluents using resins made of tamarind polysaccharide has been proven to be successful such as Fe(III), Cu(II), and Cr(III) metal ions. Tamarind 4-aminobutyric acid (TABA) resin is today regarded as one of the most effective and intriguing methods due to its eco-friendliness, low cost, and quickness. Di-vinyl benzene<sup>44</sup> is used to create the majority of resins, but TABA resin is now preferred because of its speed and low cost.

## ACKNOWLEDGEMENT

I would like to express my gratitude to Dr. Aresh Vikram Singh, professor in the department of chemistry at Jai Narain Vyas University in Jodhpur, for his wonderful guidance, motivation, and recommendations. Beyond words, he is good and kind. He has always supported my scholarly efforts.

## REFERENCES

1. Weber, W.J.; Gintely, P.M.; Katz, L.E. *J. Water Res.*, **1991**, *25*, 499-599.
2. Argun, M. E.; Dussuh, S. *Bioresource Tech.*, **2008**, *7*, 2516-2527.
3. Meena, A. K.; Kadirvely, K.; Mishra, G.K.; Rajagopal, C.; Nagar, P.N. *Hazard Mater.*, **2008**, *150*, 604-611.
4. Panayotora, M.; Velkov, B. *Environ Sci. Health a Toxic Hazard Subst. Environ Eng.*, **2003**, *38*, 545-554.
5. Saidi, M. *International Journal of Environmental Sciences.*, **2010**, *1*, 666-676.
6. Shrivastava, A. K. *Indian J Environ Protect.*, **2009**, *29*, 552-560.

7. Kpor, O. B.; Ohiobor, G. O.; Olaolu, T. D. *Advances in Bioscience and Bioengineering.*, **2014**, *2*, 37-43.
8. Moore, J. W.; Ramamoorthy, S. Springer verlag, New York., **1984**, 252-254.
9. Lement, R. E.; Eiceman, G. A.; Koester, C. J. *Environmental Analysis.*, **1995**, 67.
10. Cimino, G.; Caristi, C. *Biol. Waste.*, **1990**, *33*, 201-210.
11. Cheung, C. W.; Porter, J. F.; Mckay, G. *J. Chem. Technol. Biotechnol.*, **2000**, *75*, 963-970.
12. Salim, R.; Al-Subu, M. M.; Sahrhage, E. *J. Environ. Sci. Health.*, **1992**, *27*, 603-627.
13. Mukherjee, A. G. Galgotia Publication., New Delhi., **1986**.
14. Comp. T. R. Reinhold, New York., **1964**.
15. Dalang, F.; Buffle, J.; Haerdle, W. *Environ. Sci. Technol.*, **1984**, *18*, 134-140.
16. Forstner, U.; Wittman, T. W. Springer., **1981**.
17. Jenkins, D. W. Willey Interscience, New York., **1976**, 1.
18. Parab, H.; Joshi, S.; Shenoy, N.; Lali, A.; Sarma, U.S.; Sudersanan, M. *Process Biochem.*, **2006**, *41*, 609-615.
19. Cheng, P. X.; Ting, Y. P.; Chen, J. P.; Hong, L. *J. Colloid Interf. Sci.*, **2004**, *275*, 131-141.
20. Gerhardt, A. *Hydrobiologia.*, **1995**, *306*, 229-240.
21. Laura, A. *J. Chemical Engineering.*, **1927**, *25*, 7.
22. Thompson, H.S.; Royl. *Agr. Soc. Engl.*, **1850**, *11*, 68.
23. Way, J.T.; Roy, I. *J. Agr. Soc. Engl.*, **1850**, *11*, 313.
24. Eichorn H. *J. Ann. Physic. Chem.*, **1858**, *105*, 126.
25. Gans R. *Jahrb. Press. Geol. Landesantalt (Berlin).*, **1905**, *26*, 179.
26. Harms, F.; Rumpel A. *Pure Appt. Chem.*, **1903**, *50*.
27. Adams, B.A.; Holms, E. L. *J. Soc. Chem. Ind.*, **1935**, *54*, 11.
28. Sharma, R.K. *Pure Appli. Chemi.*, **2001**, *73*, 181-186.
29. Singh, A.V.; Soni, D.K.; Kumawat, I.K. *Water and Environ. J.*, **2012**, *26*, 371-380.
30. Roy, P.K.; Rawat, A.S.; Choudhary, V. *J. Appl. Polym. Sci.*, **2004**, *94*, 1771-1779.
31. Porath, I.; Fornstedt, N. *J. Chromatog A.*, **1970**, *51*, 479-489.
32. "Guar Industry Outlook **2015**", Report, (NIAM) and (NCDX), November.
33. Santosh, K. GAIN Report Number: IN4035, USDA Foreign Agricultural Services., **2014**.
34. Undersander, D.J.; Putnam, D.H.; Kaminski, A.R.; Kelling, K.A.; Doll, J.D.; Oplinger, E.S.; Gunsolus J.L. *Alternative Field Crops Manual*, Accessed on October 7, **2015**.
35. Sharma, P.; Gummagolmath, K.C. *Agricultural Economics Research Review.*, **2012**, *25*, 37-4.
36. Chowdhary, M. Patent 20020052298, U.S, **2002**.
37. Sano, M.; Miyata, E.; Tamano, S.; Hagiwara, N.; Shirai, T. *Food and Chem Toxicol.*, **1996**, *46*, 3-7.
38. Nagar, S.; Singh, A. V. *Int J of Scientific Research.*, **2021**, *10*, 1-6.
39. Nagar, S.; Singh, A.V. *Research Journal of Chemical sciences.*, **2022**, *12*(1), 1-10.
40. Bargujar, S. *Polimetry.*, **2022**, *67*(5).
41. Fernando, S. The royal society publishing, march., **2023**.
42. Zhiying, B. *Journal of Ethnopharmacology.*, **2023**, *305*.
43. Fadel, D.A.; Bahy, S. M. El.; Abdelaziz, Y.A. *Desalination and Water Treatment.*, **2016**, *57*, 53, 25718-25728.
44. Meyyappan, R. *Desalination and water treatment.*, **2016**, *57*, 43.