

***Olax Imbricata*-Derived Compounds with α -Glucosidase Activity: *In vitro* Combined Molecular Docking**

**NGA THI VO¹, HUONG THI MY NGUYEN², TUYET THI ANH NGUYEN³
and HAO MINH HOANG^{1*}**

¹Faculty of Chemical and Food Technology, Ho Chi Minh City University of Technology and Education, Ho Chi Minh City, Vietnam.

²Faculty of Chemistry, University of Science, Vietnam National University-Ho Chi Minh City, Ho Chi Minh City, Vietnam.

³Faculty of Chemistry, Ho Chi Minh City University of Education, Ho Chi Minh City, Vietnam.

*Corresponding author E-mail: haohm@hcmute.edu.vn

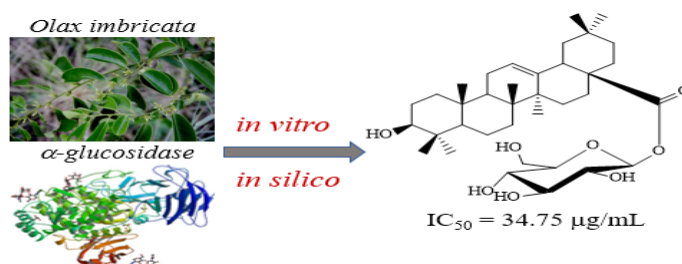
<http://dx.doi.org/10.13005/ojc/360207>

(Received: February 18, 2020; Accepted: March 20, 2020)

ABSTRACT

Seven compounds (1-7) from *Olax imbricata* were evaluated the inhibitory activity against α -glucosidase. Compound 7 has exhibited stronger activity ($IC_{50} = 34.75 \mu\text{g/mL}$) than that of acarbose ($IC_{50} = 187.50 \mu\text{g/mL}$), a positive control. The molecular docking results revealed that compound 7 strongly inhibits α -glucosidase due to the formation of a stable ligand- α -glucosidase complex via hydrogen bonds and hydrophobic interactions. The favorable complex formation of 7 with target enzyme gave the more negative docking score-DS (-28.52 kcal/mol) than that of acarbose (-23.01 kcal/mol). A slight inhibitory activity was observed for 4 ($IC_{50} = 217.50 \mu\text{g/mL}$, DS = -21.35 kcal/mol) while compounds 1, 2, 3, 5 and 6 giving IC_{50} values > 256 $\mu\text{g/mL}$ and less negative binding energies have shown no effects on the α -Glucosidase inhibition.

Graphical abstract



Keywords: Diabetes, *Olax imbricata*, α -Glucosidase, Acarbose, Molecular docking.

INTRODUCTION

Diabetes, characterized by a high blood glucose concentration over time, leads to amputation, blindness and reduced renal function. Diabetes resulting from defects in insulin, a hormone produced from the pancreas, occurs either the pancreas not producing enough insulin (insulin-dependent diabetes) or the cells not responding to the insulin produced (insulin resistance)¹. Insulin regulates the metabolism of proteins by promoting the absorption of carbohydrates, especially glucose from the blood into cells. Therefore, the relative insulin insufficiency (high glucose levels) in the blood would damage to the metabolic context of the organism. In order to maintain normal glucose levels in the blood, the inhibition of the glucose production from carbohydrates could be taken into account. α -Glucosidase, an enzyme digestion, is responsible for the hydrolysis of carbohydrates in the small intestine. α -Glucose released by the activity of this enzyme on 1,4- α -glycosidic bonds of carbohydrates, and thus a high glucose level is found in the blood²⁻⁴. As a result, this enzyme was considered as an effective target for the diabetic therapy. There are few α -Glucosidase inhibitors in the clinical practice but they have limited efficacy and are associated with side effects. Thus, new effective and safe drugs such as various bioactive components in plants are further explored for the development of more useful α -Glucosidase inhibitors.

The genus *Olox* belongs to Olacaceae and consists of a huge number of bioactive metabolites. Natural products isolated from this genus showed various biological functions including anticancer, inflammatory, Alzheimer's diseases⁵⁻⁷. To the best of our updates there was a report on the α -Glucosidase inhibitory potential of *Olox nana*. The half maximal inhibitory concentration (IC_{50}) values of the α -Glucosidase inhibitory assay for the methanolic extract and acarbose used as positive control were 639.89 μ g/mL and 61.19 μ g/mL, respectively⁸. In order to continuously search and optimize structure of compounds showing the anti-diabetic activity from the genus *Olox*, the *In vitro* and molecular docking results involving seven compounds isolated from *Olox imbricata* with α -Glucosidase were reported in our present work.

MATERIALS AND METHODOLOGY

Natural compounds and their chemical structures

The isolation and structure elucidation of seven compounds (1-7, 1-4 are novel) from *Olox imbricata* have been reported in details in our previous publications⁹⁻¹². Pure materials were used for *In vitro* experiments with α -Glucosidase while their chemical structures (Fig. 1) selected for molecular docking to analyze the binding interactions with receptor.

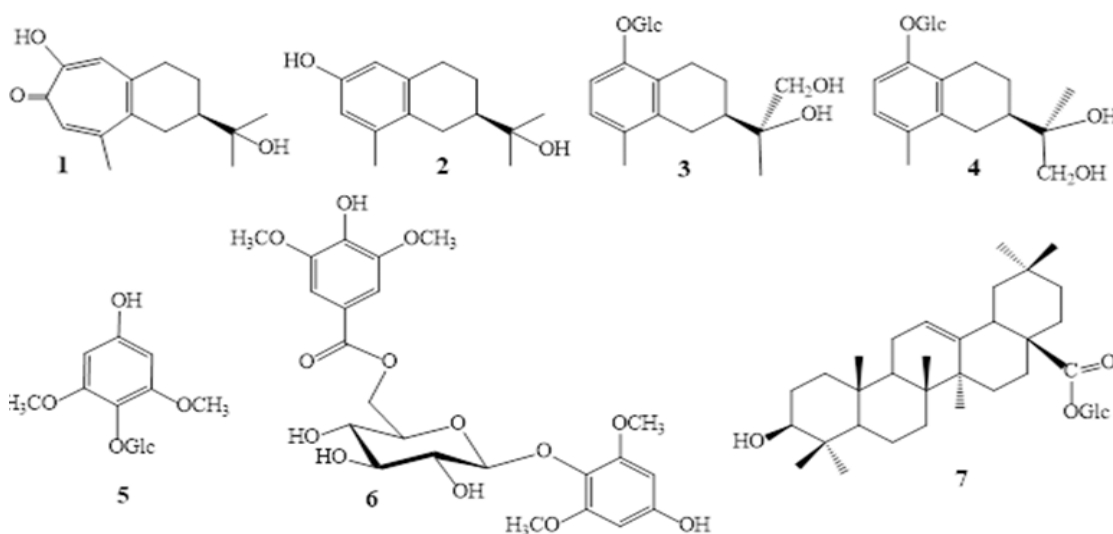


Fig. 1. Chemical structures of seven natural compounds (1-7) extracted from *Olox imbricata* were subjected to the α -Glucosidase inhibitory assay and molecular docking. Glc refers to a glucose unit connected aglycone through an ether linkage

α -Glucosidase inhibition assay

The α -glucosidase inhibitory assay was carried out following the published procedure described by Hakamata with some modifications¹³. Samples were dissolved in dimethylsulfoxide (DMSO, Aldrich 99.9%) at different concentrations for the α -glucosidase inhibitory assay. A total reaction volume of 200 μ L was added to each well of the 96-well plate. The reaction solution containing 40 μ L 0.1 M phosphate buffer solution at pH 6.8, 25 μ L α -glucosidase 0.2 unit/mL (CAS No 9001-42-7, from *Saccharomyces cerevisiae*, Aldrich), 10 μ L sample solution and 25 μ L *p*-nitrophenyl α -D-glucopyranoside 2.5 mM (Aldrich 99%) was added to each well and mixed. Subsequently, the mixture was incubated for 30 min at 37°C. Finally, the reaction solution was terminated by adding 100 μ L of 0.2 M sodium carbonate solution. For the negative control, the sample was replaced with the buffer solution and acarbose was used as positive control. Experiments were performed in triplicate. The absorbance of the sample was measured with a BIOTEK microplate reader at 410 nm. The percent inhibition I (%) of α -Glucosidase inhibitory activity was calculated using the equation (1):

$$I(\%) = \frac{A_{(blank)} - A_{(sample)}}{A_{(blank)}} \times 100\% \quad (1)$$

Here, $A_{(blank)}$ and $A_{(sample)}$ are the absorbances of the blank and sample, respectively.

The IC_{50} (the half maximal inhibitory concentration) was determined by calibration curve equation of the percent inhibition versus sample concentration using Tablecurve software. IC_{50} values are the mean values of three experiments.

Preparation of α -Glucosidase and ligands for molecular docking

The crystal structure of α -Glucosidase was retrieved from the protein data bank (PDB: 3W37)¹⁴. The chain and binding sites of target enzyme were prepared by using Molecular Operating Environment 2008.10 (MOE 2008.10) software. In LigX tool, the 3D structure was loaded into MOE, the co-crystallized ligand acarbose with α -Glucosidase receptor was selected as a reference ligand. The three-dimensional (3D) protonation was carried out to add protons and partial charges to the system. Sequentially, the receptor atoms were added tethers and performed an energy minimization of the ligand

and pocket residues. The unbound water molecules surrounding the active sites were deleted in the next step and finally, the prepared α -Glucosidase was saved for molecular docking as *.pdb. Prior to docking, the 3D structures of seven compounds were drawn in MOE and minimize energy to obtain the conformation in the lowest energy by using SYBYL-X 2.0. The energy minimization procedure was ended when an energy change between two consecutive conformations was 0.0001 kJ/mol. Each ligand was saved as *.mol2 for further analysis.

Molecular docking was carried out to analyze the binding interactions of ligands and α -glucosidase by using LeadIT 2.0.2. In order to dock ligands into the prepared α -glucosidase, the binding sites of receptor were initially defined by selecting acarbose as a reference ligand and a binding pocket including amino acids within radius of 6.5 Å. The ligands were loaded from the docking library. The top-ranked conformations of each ligand were 10, i.e., the most negative docking score was ranked as 1. The maximum number of solutions per iteration and fragmentation are 1000 and 200, respectively.

RESULTS

Redocking

The docking procedure and parameters need to be validated by redocking. The native pose of acarbose, a co-crystallized ligand with α -glucosidase, was separated from the receptor and redocked to its binding sites. Fig. 2 gave a superposition between the native binding pose of acarbose from an acarbose- α -glucosidase complex crystal structure with the one extracted from the same complex. The root mean square deviation (RMSD) value of redocking was 0.8469.

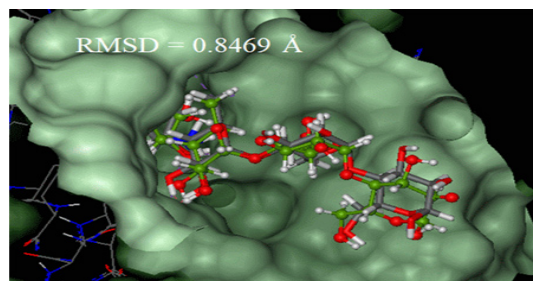


Fig. 2. A superposition of an original acarbose pose (sticks in green, atoms were exhibited in balls: carbon: green, oxygen: red, nitrogen: blue, hydrogen: white) and a co-crystallized acarbose one (sticks in grey) separated from α -Glucosidase

crystal conformer of the ligand. The RMSD value less than 2 Å suggests that the ligand-protein docking protocol is satisfactory for pose predictions¹⁵⁻¹⁷. The exhibited RMSD value of 0.8469 Å confirmed that the docking program is applicable to find the optimal conformation and binding affinity of the inhibitors within the α -Glucosidase binding pocket.

The rank order of potential activities according to the IC_{50} values, including acarbose is 1, 2, 3, 5, 6 < 4 < acarbose < 7. Compound 7 exhibited a much lower IC_{50} value (34.75 μ g/mL) than that of acarbose (187.50 μ g/mL). The IC_{50} values of 1, 2, 3, 5, 6 are more than 256 μ g/mL. These structures displayed no effects on the inhibitory activities while compound 4 (217.50 μ g/mL) exhibited a decent activity against α -Glucosidase when compared to acarbose.

The inhibition activity basically correlates with the number of interactions which numerically described by docking scores. The docking score calculation (free binding energy) was based on non-covalent intermolecular interactions between ligand-protein such as hydrogen bonds and hydrophobic contacts¹⁸. A much negative docking score indicates a stable ligand-protein complex and thus, a likely binding interaction. The free binding energies of forming complexes were negative and less than -9.04 kcal/mol. The results of Table 1 and Fig. 3 can be assumed that the lowest IC_{50} (34.75 μ g/mL) value, i.e., the most inhibitory activity of 7 was mainly attributable to the formation of a stable ligand-enzyme complex. This led to be the most negative binding energy (-28.52 kcal/mol) of 7 compared to the energies of the docked natural compounds. Interestingly, the inhibitory activity of 7 is much higher than that of the reference. The number of established interactions can be relevant in this case. The residues of Asp-232, Arg-552, Asp-568 are located in the active site to form hydrogen bonds with 7. The sulfur atom of Met-470 formed hydrogen bond with hydroxy group of glucose moiety. These residues were found to form hydrogen bonds with acarbose with the exception of Met-470, 20. In addition, the aglycone containing ring structure is enclosed by hydrophobic contacts with Phe-236, Met-470, Asp-232 and Phe-476. These interactions enhance the stability of a ligand-enzyme complex and thus, reduce free binding energy. Theoretically, molecular docking predicts the preferred orientation of one

molecule within active site of target enzyme, i.e., pharmacokinetics of substance has not been taken into account. Here, a synergy of pharmacokinetics and ligand-enzyme complex stability can be responsible for a promising inhibition of 7 toward α -Glucosidase.

The binding energies of docked 3 (-20.11 kcal/mol) and 4 (-21.35 kcal/mol) were found to be negative. Compound 3 differs from 4 only at the absolute configuration at C-11. The different 3D orientations of groups at C-11 in space caused no more binding modes in the active pocket. However, compound 4 at the IC_{50} value of 217.50 μ g/mL exhibited a better activity against α -Glucosidase enzyme while 3 (> 256 μ g/mL) was inactive. The IC_{50} values of compounds 1, 2, 5 and 6 (> 256 μ g/mL) followed a similar trend. They did not exhibit any inhibitory activities against α -Glucosidase. The results can be mainly attributable to the unfavorable formation of the ligand- α -glucosidase complexes regardless of possible interactions. Therefore, the binding energies of docked structures were found to be less negative (-9.04 -12.87 kcal/mol).

CONCLUSION

In conclusion, seven compounds isolated from *Olax imbricata* were subjected to α -Glucosidase inhibitory assay and molecular docking. The results of natural compounds were compared with acarbose as the reference drug. Compound 7 exhibited a promising inhibitory activity against α -glycosidase with a much lower IC_{50} value than that of acarbose. Molecular docking was conducted and provided insights of the active sites in which a ligand-enzyme complex can be formed. The simulation results showed that compound 7 containing a glucose moiety connected to terpene skeleton created efficient interactions with amino acid residues surrounding the binding site. The lowest binding energy of this saponin is responsible for the high inhibitory activity. The other compounds 1, 2, 3, 5 and 6, which except for 4, did not show the α -Glycosidase inhibition. They might form unfavorable ligand-enzyme complexes in the active site. The study provided new naturally structure insights for the development of novel α -Glycosidase inhibitors, which differ from the commonly used sugar mimetics.

ACKNOWLEDGEMENT

Ho Chi Minh City University of Technology and Education is gratefully acknowledged by providing the facilities necessary to complete this

project. The authors thank Prof. Phung Phi Kim Nguyen for helpful comments.

Conflicts of interest

No potential conflict of interest was reported by the authors.

REFERENCES

- Sonksen, P.; Sonksen, J. Br. *J. Anaesth.*, **2000**, 85(1), 69–79.
- Bruni, C. B.; Sica, V.; Auricchio, F.; Covelli, I. *Biochim. Biophys. Acta.*, **1970**, 212(3), 470–477.
- Van de Laar, F. A. *Vasc. Health Risk Manag.*, **2008**, 4(6), 1189-1195.
- Kim, Y. M.; Jeong, Y. K.; Wang, M. H.; Lee, W. Y.; Rhee, H. I. *Nutrition.*, **2005**, 21(6), 756–761.
- Saliu, J. A.; Olabiyi, A. A. *Pharm. Biol.*, **2018**, 55(1), 252–257.
- Popoola, T. D.; Awodele, O.; Omisanya, A.; Obi, N.; Umezina, C.; Fatokun, A. A. *J. Ethnopharmacol.*, **2016**, 194, 440–449.
- Okoye, F. B.; Sawadogo, W. R.; Sendker, J.; Aly, A. H.; Quandt, B.; Wray, V.; Hensel, A.; Esimone, C. O.; Debbab, A.; Diederich, M. *J. Ethnopharmacol.*, **2015**, 176, 27–34.
- Ovais, M.; Ayaz, M.; Khalil, A. T.; Shah, S. A.; Jan, M. S.; Raza, A.; Shahid, M.; Shinwari, Z. K. *BMC Complement Altern. Med.*, **2018**, 18(1), 13 pages.
- Nguyen, T. M. H.; Vo, T. N.; Huynh, T. M. S.; Do, T. M. L.; Aree, T.; Tip-pyang, S.; Phan, D. C. T.; Nguyen, T. T.; Nguyen, K. P. P. *Fitoterapia*, **2019**, 132, 1-6.
- Huynh, T. M. S.; Nguyen, T. M. H.; Nguyen, K. P. P.; Vo, T. N. *Vietnam Journal of Chemistry.*, **2018**, 56(3E12), 336-342.
- Huynh, T. M. S.; Vo, T. N.; Nguyen, K. P. P. *Vietnam Journal of Chemistry.*, **2015**, 53(6e3), 81-84.
- Vo, T. N.; Huynh, T. M. S.; Nguyen, T. M. H.; Duong, T. H.; Nguyen, K. P. P. *Science & Technology Development Journal.*, **2019**, 22(3), 324- 334.
- Hakamata, W.; Kurihara, M.; Okuda, H.; Nishio, T.; Oku, T. *Curr. Top. Med. Chem.*, **2009**, 9(1), 3-12.
- Tagami, T.; Yamashita, K.; Okuyama, M.; Mori, H.; Yao, M.; Kimura, A. *J. Biol. Chem.*, **2013**, 288(26), 19296-19303.
- Kitchen, D. B.; Decornez, H.; Furr, J. R.; Bajorath, J. *Nat. Rev. Drug Discov.*, **2004**, 3, 935–949.
- Plewczynski, D.; Łaźniewski, M.; Augustyniak, R.; Ginalski, K. *J. Comput. Chem.*, **2011**, 32, 742–755.
- Bell, E. W.; Zhang, Y. *J. Cheminformatics.*, **2019**, 11(40), 9.
- Böhm, H. J. *J Comput Aid Mol Des.*, **1998**, 12(4), 309-323.
- Chiba, S. *Biosci. Biotechnol. Biochem.*, **1997**, 6(18), 1233–1239.
- Bischoff, H. *Clin Invest Med.*, **1995**, 18(4), 303-311.