



Mathematical Modeling of Gas Separation in Flat-sheet Membrane Contactors

AZAM MARJANI^{1*}, SAEED SHIRAZIAN¹,
MAHMOUD RANJBAR¹ and MITRA AHMADI²

¹Islamic Azad University, Arak Branch, Department of Chemistry, Arak (Iran).
²Department of Chemical Engineering, University of Payam Noor, Tehran (Iran).
*Corresponding author: E-mail: a-marjani@iau-arak.ac.ir

(Received: December 10, 2012; Accepted: January 04, 2012)

ABSTRACT

Gas-liquid membrane contactors offer several practical advantages including high surface area per unit volume; independent control of gas and liquid velocities without any flooding, loading, weeping, or foaming, pre-determined gas-liquid interfacial area, membrane modules, capability of linear scale-up; low corrosion problems, and low operation and capital costs. Two common types of membrane contactors are extensively utilized for gas separation. However, most studies have focused on the hollow-fiber membrane contactors. The main advantage of flat-sheet membrane contactors is that not only any type of membrane can be formed into flat-sheet membrane module but also fabrication of flat-sheet membranes is also easier compared to other types of membranes.

A mass transfer model was developed in this study to investigate the performance of flat-sheet membrane contactors for gas absorption. The model was based on the behavior of gas and liquid phases in the membrane contactor by taking the distribution of gas concentration as well as the gas and liquid velocity profiles along the flowing direction into account. Both chemical and physical absorptions were considered. The model also uses computational fluid dynamics of mass and momentum transfer in both gas and liquid phases in the membrane contactor. An appropriate numerical method based on the finite element method was applied to solve the model equations. The model predictions were validated against the experimental data obtained from literature for the absorption of CO₂. The results were in good agreement with the experimental data with different values of flow rates. The model predictions indicated that the removal of CO₂ was increased with increasing the liquid velocity in the membrane contactor. On the other hand, increasing temperature and gas velocity in the flat-sheet membrane contactor showed an opposite effect on the removal of CO₂. It is indicated that the proposed model well predicts the mass transfer within the flat-sheet membrane contactors.

Key words: Membrane Contactor; Gas Absorption; Mass Transfer; Modeling; CFD.

INTRODUCTION

Current carbon dioxide removal technologies are based on a variety of physical

and chemical processes such as adsorption, absorption, cryogenic and membrane contactors¹. Conventional processes for the removal of CO₂ suffer from many problems such as entraining,

channeling, flooding, foaming and high capital and operating costs². Many researchers have examined the possibilities of increasing the efficiency of these processes to reduce the effect of their problems. Gas-liquid membrane contactors are expected to solve the disadvantages of the conventional processes when incorporated into the gas treating processes¹. The characteristic of gas-liquid membrane contactors is that the gas stream flows on one side and the absorbent liquid flows on the other side of the membrane without phase dispersion, thus avoiding the problems often encountered in the conventional equipment such as foaming, flooding, channeling and entrainment².

Experiments and theories about the gas-liquid membrane contactors had been done since Zhang and Cussler first studied the work³. Using polypropylene membrane, Kreulen *et al.*,⁴ studied absorption of CO₂ into water/glycerol mixtures. The authors studied the membrane as gas-liquid contactors in the case of both physical and chemical absorption.

There is a definite need for a mass transfer model that can provide a general simulation of the chemical and physical absorption of gases in gas-liquid flat sheet membrane contactors. The main purpose of this study is to solve a 2D mathematical model for the absorption of CO₂ in flat sheet membrane contactors. The model is then validated using experimental data obtained from literature for the absorption of CO₂ in water. Influence of different process parameters will be investigated on the mass transfer and absorption of CO₂ in the membrane contactor.

Theory

A comprehensive two-dimensional mathematical model was used for the transport of carbon dioxide through flat sheet membrane contactors. In this work, the absorption of CO₂ from CO₂/N₂ gas mixture in pure water is studied in a flat sheet membrane contactor. The model was based on "non-wetted mode" in which the gas phase filled the membrane pores for co-current gas-liquid contacts. Laminar velocity distributions are used for the gas and liquid flow in the membrane contactor.

Model equations

A 2D mass transfer model was used for a flat sheet membrane, as shown in Fig. 1. The gas flows with a fully developed laminar velocity in one side and the liquid absorbent (pure water) flows with laminar flow in the other side. Fig. 1 shows the cross sectional area of the flat sheet membrane contactor. The steady state two-dimensional mass balances are carried out for the membrane contactor. The gas phase is fed to the one side (at $z = 0$), while the absorbent is passed through the other side (at $z = 0$). Carbon dioxide is removed from the gas mixture by diffusing through the membrane and then is absorbed in the solvent (water).

The assumptions made in developing this model are as follows:

- ✓ Steady state and isothermal conditions.
- ✓ Fully developed gas and liquid velocity profile in the flat sheet membrane.
- ✓ Ideal gas behavior is imposed.
- ✓ The Henry's law is applicable for gas-liquid interface.
- ✓ Laminar flow for gas and liquid flow in the membrane contactor.
- ✓ Non-wetted mode in which the gas filled the membrane pores.

The continuity equation for each species in a reactive absorption system can be expressed as [5]:

$$\frac{\partial C_i}{\partial t} = -(\nabla \cdot C_i V) - (\nabla \cdot J_i) + R_i \quad \dots(1)$$

where C_i , J_i , R_i , V and t are the concentration, diffusive flux, reaction rate of species i , velocity and time, respectively. Either Fick's law of diffusion or Maxwell-Stefan theory can be used for the calculation of diffusive fluxes of species i [2].

The continuity equation for steady state for CO₂ in the three sections of flat sheet membrane contactor is obtained using Fick's law of diffusion for estimation of diffusive flux:

$$D_{CO_2} \left[\frac{\partial^2 C_{CO_2}}{\partial x^2} + \frac{\partial^2 C_{CO_2}}{\partial z^2} \right] = V_z \frac{\partial C_{CO_2}}{\partial z} \quad \dots(2)$$

In a laminar flow, a fully developed velocity profile can be described as [5]:

$$V_z = 6\bar{V} \left[\left(\frac{x}{w} \right) - \left(\frac{x}{w} \right)^2 \right] \quad \dots(3)$$

where \bar{V} is the average velocity in the flat sheet membrane.

The boundary conditions for mass transfer equations are:

$$\text{at } z=0, C_{CO_2} = C_0 \quad \dots(4)$$

$$\text{at } x=0, \frac{\partial C_{CO_2}}{\partial x} = 0 \quad \dots(5)$$

$$\text{at } x=w, C_{CO_2} = C_{CO_2, gas} \times m \quad \dots(6)$$

where m is the physical solubility of CO_2 in the liquid absorbent (pure water).

Method of numerical solution

The model equations with the appropriate boundary conditions were solved using COMSOL Multiphysics software, which uses finite element method (FEM) for numerical solutions of differential equations. The finite element method (FEM) is

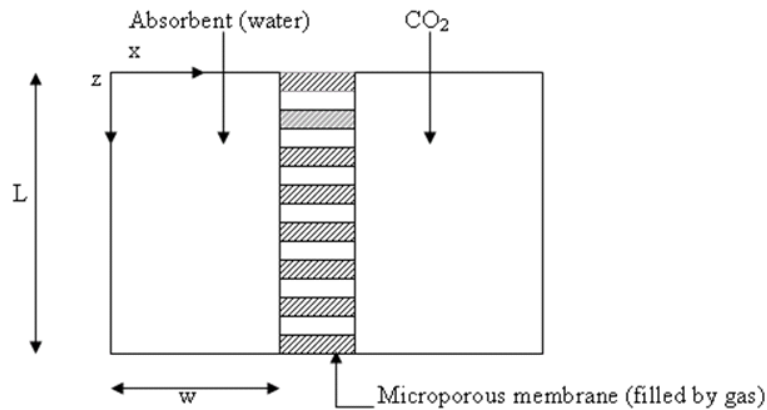


Fig. 1: Schematic drawing of CO_2 absorption in flat sheet membrane.

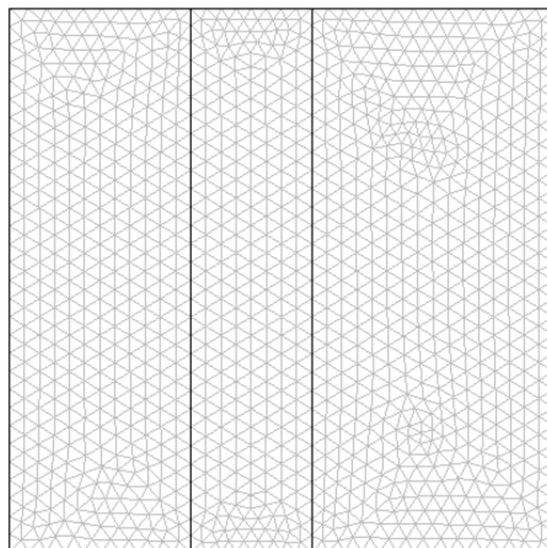


Fig. 2: Meshed geometry used for numerical simulation. There are 2336 meshes

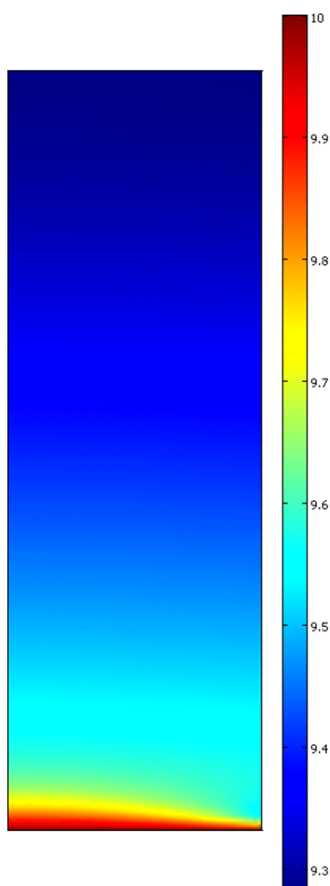


Fig. 3: 2D concentration distribution of CO_2 in the gas phase. $V_g=0.001$ m/s, $V_l=0.1$ m/s, $C_0=10$ mol/m³

combined with adaptive meshing and error control using numerical solver of UMFPAK. The meshed geometry is illustrated in Fig. 2.

RESULTS AND DISCUSSION

The inlet concentration of CO_2 in CO_2/N_2 mixture is taken 10 mol/m³. The total gas phase concentration was assumed constant in the calculations. The length of the membrane considered in this work, is 0.8 m and the distance between the contactor wall and the membrane is 0.02 m. The physical solubility (m) of CO_2 in pure water and the diffusion coefficient of CO_2 in the water and N_2 were obtained from the literatures^{6, 7}.

Concentration distribution of CO_2 in the gas phase

Physical absorption of CO_2 in pure water using a flat sheet membrane contactor is simulated here. The flat sheet membrane geometry and operating parameters used in the simulation are the same as those used by Wang *et al.*,⁸.

Fig. 3 presents 2-dimensional concentration distribution of CO_2 in the gas phase of flat sheet membrane contactor. The gas phase flows from one side of the membrane, i.e. at $z = 0$ where the concentration of carbon dioxide is the maximum. Water passes inside the other side concurrently. Fig. 4 also indicates axial concentration distribution of CO_2 in the gas phase.

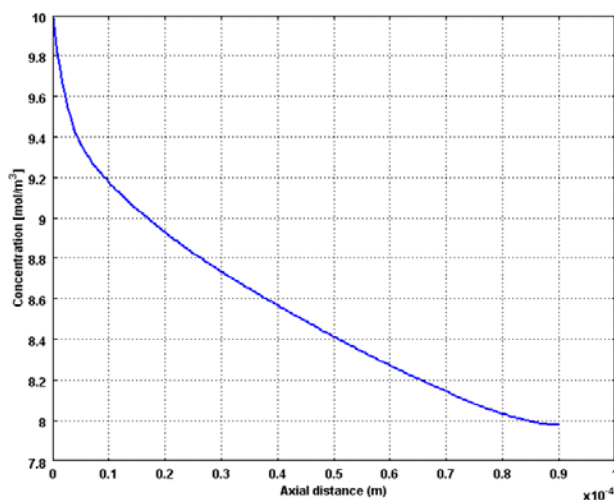


Fig. 4: Axial concentration distribution of CO_2 in the gas phase. $V_g=0.001$ m/s, $V_l=0.1$ m/s, $C_0=10$ mol/m³

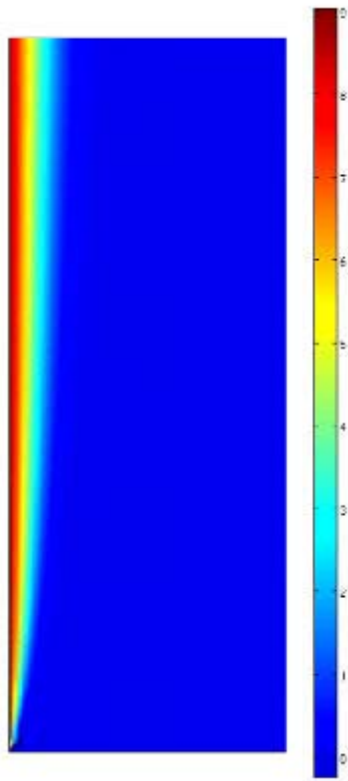


Fig. 5: 2D concentration distribution of CO₂ in the liquid phase. $V_g=0.001$ m/s, $V_l=0.001$ m/s, $C_0=10$ mol/m³

As the feed flows through the membrane contactor, CO₂ is transferred toward the membrane pores due to concentration difference between the bulk and the membrane surface. Concentration difference is the driving force for mass transfer of carbon dioxide into the membrane.

Concentration distribution of CO₂ in the liquid phase

Concentration distribution of CO₂ in the liquid phase is illustrated in Figs. 5 & 6. Fig. 5 shows the surface distribution and Fig. 6 shows the curve of concentration in x direction at the middle of membrane contactor. The transport of carbon dioxide from the gas phase into the liquid phase involves two mechanisms, diffusion and convection. The convection contribution depends on the velocity of fluid or media.

Figs. 5 & 6 also indicate that in the regions near the membrane wall, concentration change is great. This is the evidence for formation of concentration boundary layer.

Distribution of CO₂ mass transfer flux

Variations of the mass transfer flux of CO₂ in the gas phase are indicated in Fig. 7. The mass transfer fluxes are illustrated by arrows in Fig. 7. The mass transfer flux is summation of diffusional

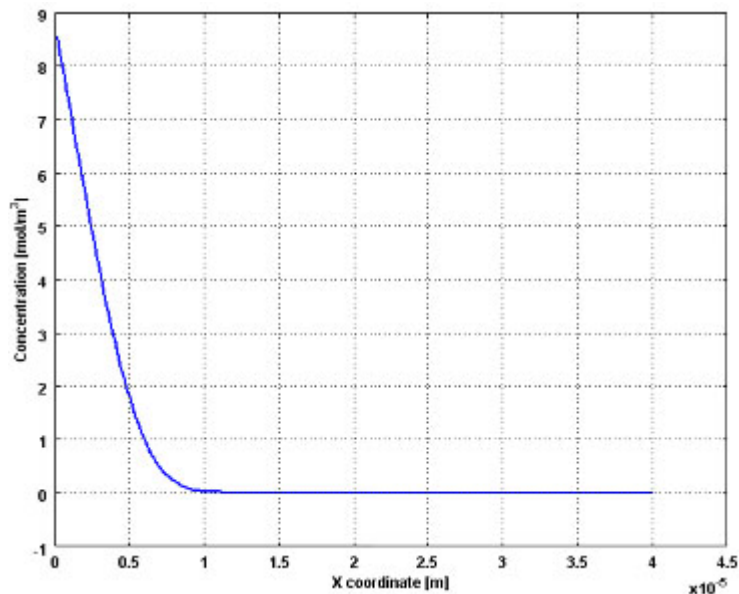


Fig. 6: Concentration profile of CO₂ in the liquid phase. $V_g=0.001$ m/s, $V_l=0.001$ m/s, $C_0=10$ mol/m³

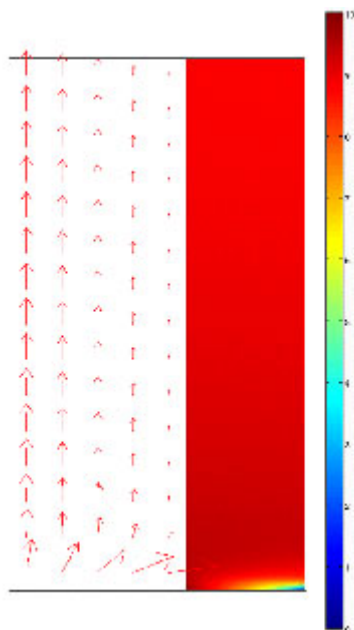


Fig. 7: Arrows of total flux in the gas phase and concentration distribution of CO₂ inside the membrane. $V_g=0.0003$ m/s, $V_l=0.001$ m/s, $C_0=10$ mol/m³

and convection flux of CO₂ in the feed side. It is clearly shown that in the regions near the axis of the feed i.e., $x = 0$ the total flux is higher than other regions. This is due to high convection mass transfer in these regions. In fact, velocity which causes convection mass transfer is more significant in the z -direction.

CONCLUSIONS

This work presents a numerical simulation of mass transfer in a flat sheet membrane contactor for a gas–liquid process. The numerical simulation was based on solving the conservation equations for gas in the membrane contactor. The influence of various process parameters on the mass transfer of CO₂ was investigated. The results for the physical absorption of CO₂ into water indicated that the developed model is capable of predicting mass transfer in the gas-liquid flat sheet membrane contactors.

REFERENCES

- Shirazian, S., A. Moghadassi, and S. Moradi, Numerical simulation of mass transfer in gas-liquid hollow fiber membrane contactors for laminar flow conditions. *Simulation Modelling Practice and Theory*, **17**(4): 708-718 (2009).
- Saeed Shirazian, Azam Marjani, Farzad Fadaei, Supercritical extraction of organic solutes from aqueous solutions by means of membrane contactors: CFD simulation, *Desalination*, **277**(1-3): Pages 135-140 (2011).
- Azam Marjani, Saeed Shirazian, Simulation of heavy metal extraction in membrane contactors using computational fluid dynamics, *Desalination*, **281**: Pages 422-428 (2011).
- Saeed Shirazian, Azam Marjani, Fatemeh Azizmohammadi, Prediction of SO₂ Transport Across Ceramic Membranes Using Finite Element Method (FEM), *Oriental journal of Chemistry* **27**(2): 485-490.
- Mahmoud Reza Sohrabi, Azam Marjani, Sadeqh Moradi, Mehran Davallo, Saeed Shirazian, Theoretical Studies on Membrane-Based Gas Separation using Computational Fluid Dynamics (CFD) of Mass Transfer, *Journal of the Chemical Society of Pakistan* **33**(4): 464-473 (2011).
- Mahmoud Reza Sohrabi, Azam Marjani, Sadeqh Moradi, Mehran Davallo, Saeed Shirazian, Mathematical modeling and numerical simulation of CO₂ transport through hollow-fiber membranes, *Applied Mathematical Modelling* **35**: 174–188 (2011)
- Mahmoud Reza Sohrabi, Azam Marjani, Saeed Shirazian, Sadeqh Moradi, Acetone and Ethanol Extraction from Water by Means of Membrane: Modeling and Numerical Simulation, *Middle-East Journal of Scientific Research* **7**(4): 530-537 (2011).
- Wang, W.P., Lin, H.T., Ho, C.D., An analytical study of laminar co-current flow gas absorption through a parallel-plate gas–liquid membrane contactor, *Ind. Eng. Chem. Res.* **278**: 181 (2006).