



Extractive Determination of Co (II) and Ni (II) by N, N'-bis(5-(4-nitrophenyl)diazenyl)-2- hydroxybenzylideneamino) ethylenediimine (NDHBDED) Impregnated with Alumina by pH Dependent SPS

MD. FARIDUR RAHMAN^{1*}, BISWAJIT CHAKRABORTY² and TANMOY DAS¹

¹Department of Chemistry, University of Burdwan, Burdwan-713104, India.

²Vivekananda Mahavidyalaya, Burdwan, WB, India.

*Corresponding Authors E-mail: faridur1979@gmail.com

<http://dx.doi.org/10.13005/ojc/320328>

(Received: May 08, 2016; Accepted: June 28, 2016)

ABSTRACT

A new azo dye Schiff base analytical reagent, namely N, N' -bis(5-(4-nitrophenyl)diazenyl)-2-hydroxybenzylideneamino)ethylenediimine (NDHBDED) has been synthesized and it was impregnated with alumina for extractive determination of metal ions. In this report the solid sorbent matrix was used for the extraction of Co (II) and Ni (II) ions by pH dependent SPS method. The maximum molar absorbances were at 445 nm and 508 nm at pH 4.5 and 5.0 for Co (II) and Ni (II) ions respectively. The Beer's law range was 5-100 µg/ml for both the metal ions. Job's method and mole-ratio method showed that metal-ligand ratio in the complexes to be 1:1. The Molar absorptivity for Co (II) and Ni (II) were 1.351×10^{-4} L mol⁻¹ cm⁻¹ and 1.925×10^{-4} L mol⁻¹ cm⁻¹ respectively. The Sandell's sensitivity was 0.005 µg/cm² and 0.004 µg/cm² for Co (II) and Ni (II) ions respectively. The proposed method was successfully applied to the determination of each metal ion in real samples and tap water.

Keywords: Azo dye Schiff base analytical reagent, Co (II) and Ni (II) complexes, pH metric SPS.

INTRODUCTION

The determination of metal ions in natural samples is very important part of environment and human health¹⁻⁴. Metal ions-ligands coordination complexes are the intense analytical approach for the determination of metal ions of the environmental

samples⁵⁻⁸. Some metal ions are constituents of the metabolic enzyme in biological system, but their toxicity influence for direct determination in environmental samples. Cobalt and nickel are most common transitions metals. The significance of cobalt as transitions metal lies in its wide spectrum of applications such as in industries and consumers

products. Another transition metal nickel is vital and its compounds are toxic for many biological systems. It can be considered is one of the frontier elements in the alloys industries for stainless steels, cast iron, german silver and monel metal and also found in many heat resistant alloys. It also plays vital roles in the biology of micro-organisms, plants and is an essential element in human diet⁹⁻¹³.

Literature survey reveals several instrumental techniques have been employed for the determination of Co (II) and Ni (II), such as spectrofluorimetry, X-ray fluorescence spectrometry, neutron activation analysis, atomic absorption spectrometry, inductively coupled plasma mass spectrometry, chemiluminescence, of which UV-visible solid phase spectrophotometry is preferred because of its low cost, rapidity and easy handling¹⁴⁻¹⁷. Several methods such as liquid-liquid extraction, micellar mediated extraction, coprecipitation, cloud point extraction, electrochemical extraction and solid phase extraction are adopted for metal ions extraction¹⁸⁻²². But disadvantages such as significant chemical additives, solvent losses, complex equipments, considerable secondary waste and time consuming problems limit the application of most of these techniques. Solid phase spectrophotometric (SPS), however, solves these problems as it offers several advantages. This technique is also attractive as this is no need to use organic solvents, which may cause toxic effects.

A wide variety of reagent has been reported for the spectrophotometric reagents for determination of Co (II) and Ni (II). Some reagents were identified,

but they suffer low sensitivity, interference from diverse ions. The azo dye Schiff base compounds have been extensively studied because of their biological and structural importance. Several azo dye Schiff base ligands containing N_2O_2 -donor site have been proposed as spectrophotometric reagents for metal ions²³⁻²⁵. The importance of these compounds lies mainly in their specific and selective reactions with metal ions which forms stable complexes. In the present report, we introduced a new azo dye Schiff base ligand N, N'-bis(5-(4-nitrophenyl)diazenyl)-2-hydroxybenzylideneamino) ethylenediimine (NDHBDED) for selective solid phase spectrophotometric (SPS) determination of some heavy metal ions from environmental samples. We impregnated the azo dye Schiff base ligand with alumina for the complexation with Co (II) and Ni (II) ions prior to solid phase spectrophotometric (SPS) determination of these metal ions.

MATERIALS AND METHODS

Instrumentation

The absorbance measurements were recorded using Shimadzu UV-Vis spectrophotometer (UV-1800) fitted with 1 cm quartz cells. A mechanical shaker (BOD-incubator, YONA Mfg. Indian Instruments Manufacture Co., Kol-12) was used throughout the experiments. The pH measurements were carried out by a labtronic pH meter (Model-23) equipped with a combined glass-calomel electrode.

Reagents and Solutions

Extra pure reagents were of analytical grade from E. Marck, Germany and other metal

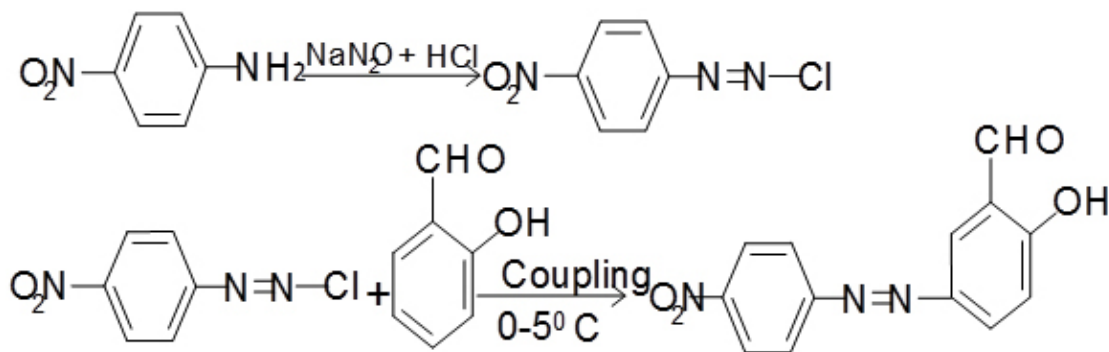


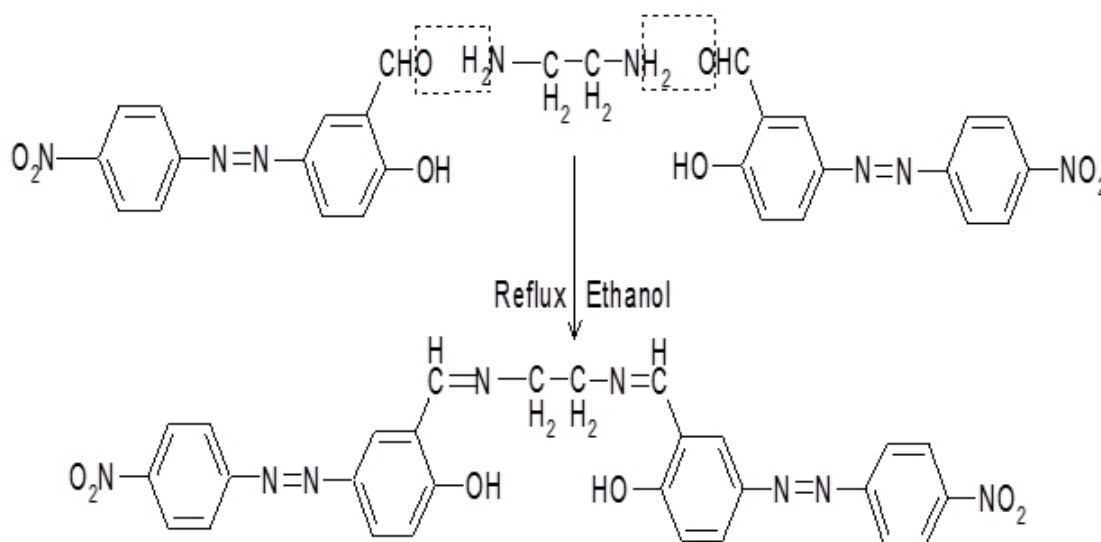
Fig. 1: The reaction scheme of the Azo Coupling of salicyldehyde

salts from BDH, India also were of analytical grade. p-nitroaniline, salicylaldehyde and ethylenediamine from Sigma and Aldrich were used for the complexing agent. A neutral solid alumina was of analytical grade reagent for the determination of Co (II) and Ni (II) from Oxford Lab., Mumbai, India. Standard stock solutions of Co (II) and Ni (II) were prepared by dissolving appropriate amount of pure grade chemicals in double distilled deionised water with addition of few drops of conc. HCl. The working

solutions were prepared by diluting the stock solution with bi-distilled water. The solutions of the complexing agent were prepared in ethanol-methanol mixture.

Synthesis of the chelating ligand

The azo dye Schiff base ligand N, N'-bis(5-(4-nitrophenyl)diazenyl)-2-hydroxybenzylideneamino) ethylenediimine (NDHBDED) ligand was synthesized by our previous reported method which was a two steps method : (a) Azo coupling of salicylaldehyde



N, N' -bis(5-(4-nitrophenyl)diazenyl)-2-hydroxybenzylideneamino)ethylenediimine(NDHBDED)

Fig. 2: The reaction scheme of synthesis of the Azo Dye Schiff Base Ligand

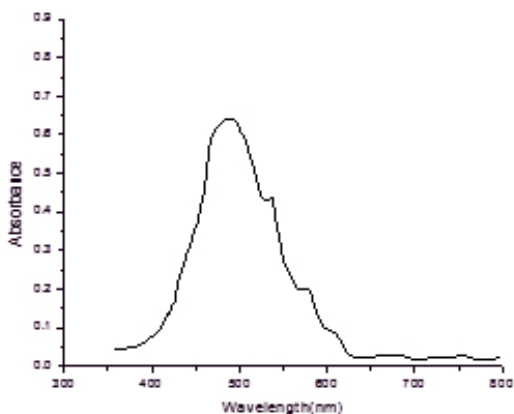


Fig. 3: Absorbance spectra of the chelating ligand

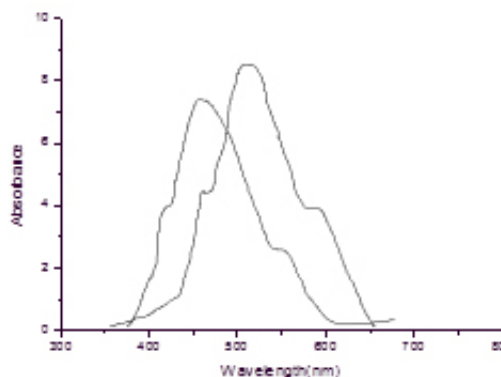


Fig. 4: Absorbance spectra for the Co (II) -NDHBDED and Ni (II) - NDHBDED complexes

(b) Synthesis of the Azo Dye Schiff Base ligand (NDHBDED). The scheme of synthesis of the ligand is illustrated in Fig. 1 & 2.

Analytical Procedures

2 g of the azo dye Schiff base (NDHBDED) chelating reagent was impregnated on the surface of 4.0 g of alumina at the ratio 1:2 in ethanol-methanol mixture and stirred for 30 minutes at room temperature. The resulting composition was left in an oven at 60° C for 48 hours. After drying, the sorbent was ground into powder for metal ions extraction. A series of standard or sample solution of 25 ml of 0.1 (M) Co (II) and 0.1 (M) Ni (II) in each flask of 100 ml and pH was adjusted from 4.0 to 5.0 using

HCl (0.1 M) and NaOH (0.1 M) solutions. 200 mg of sorbents were added to the above solutions and were shaken vigorously by a mechanical shaker at room temperature for 30 minutes to facilitate adsorption of the metal ions onto the adsorbents.

RESULTS AND DISCUSSION

UV-Vis spectra for NDHBDED is recorded by our previous report which was at λ_{\max} 500 nm and the spectra of the complexes of Co (II) - NDHBDED and Ni (II) – NDHBDED give maximum absorbance at λ_{\max} 445 nm and λ_{\max} 508 nm respectively (Fig. 3 & 4). N, N' -bis (5-(4-nitrophenyl)diazenyl)-2-hydroxybenzylideneamino

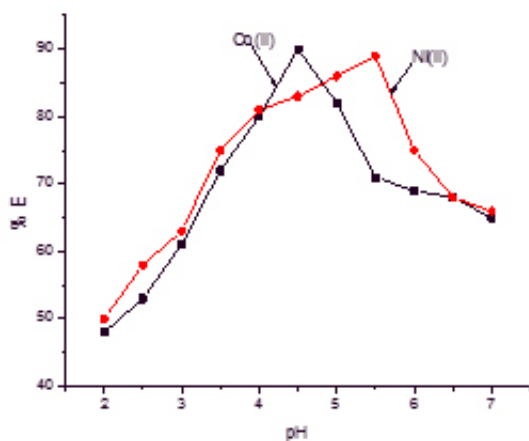


Fig. 5: Effect of pH on the extraction of both of Co (II) and Ni (II) ions

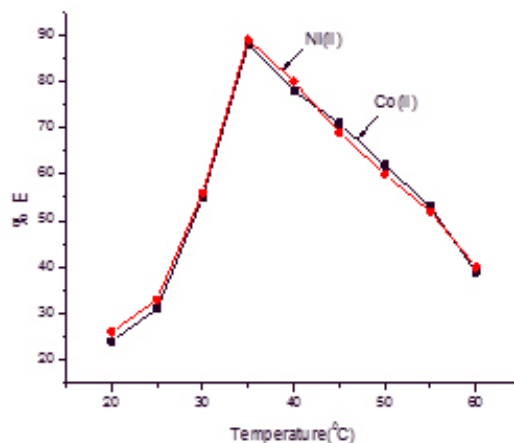


Fig. 6: Effect of temperature on the extraction both Co (II) and Ni (II) ions

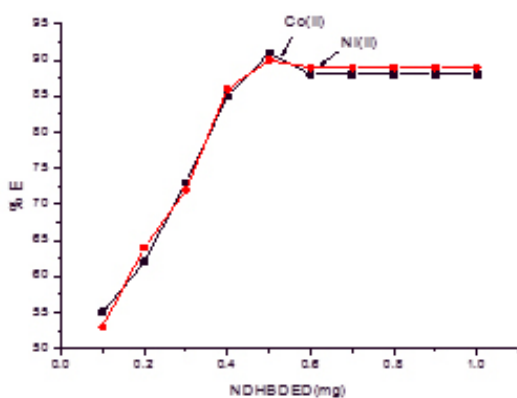


Fig. 7: Effect of the reagent concentration on the extraction of 5 µg/ml of Co (II) & Ni (II) ions

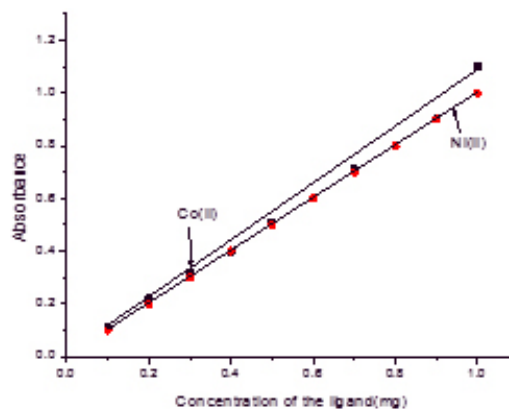


Fig. 8: Mole-Ratio of NDHBDED concentration to Co (II) and Ni (II) ions

ethylenediimine(NDHBDED) forms coloured complexes with Co (II) and Ni (II) ions which are stable and their extraction could be quantitative at pH 4.5 and 5.0 respectively. The calibration curve were constructed by plotting absorbance against the amount of Co (II) and Ni (II) ions in the concentration range of 5-100 µg/ml of each. The analytical characteristics of the complexes are given in [Table 1].

Influences of pH

The pH of the aqueous samples is the very important factor for the quantitative recoveries of the metal ions in the solid phase spectrophotometric (SPS) studies, the influences of pH of the analyte solutions on the recoveries of Co (II) and Ni (II) on the solid adsorbents in the pH range 2 - 7.5. The quantitative extraction (> 87 %) found at the pH 4.5 and 5.0 respectively for Co (II) and Ni (II). Hence, pH 4.5- 5.0 was considered for the further studies. The results are shown in [Fig.5].

Influence of temperature

The effect of temperature on the percentage of extraction of 5 µg/ml of each Co (II) and Ni (II) was studied in the range of 20 - 60°C at pH range 4.5 to 5.0. The results showed in Fig.6, that the maximum percentage of sorption of both the metal ions is found at 35°C, Hence, 35°C was considered for the further studies.

Effect of reagent (NDHBDED) concentration

The effect of the reagent concentration impregnated with alumina was investigated in the range of 0.1 to 1.0 mg. The results showed that the extraction of metal ions was increased on the addition of the reagent. It was found that the quantitative extraction (> 90 %) at 0.5 mg. But beyond this range of reagent concentration does not influence on the extraction of the metal ions. The results are given in Fig.7.

Effect of Co (II) and Ni (II) ion concentration

The percentage extraction efficiency of the metal ions in the range of 5-100 µg/ml was studied at a fixed amount of the reagent (0.5 mg) on the solid matrix at pH 5.0. Almost 87 % of both the metal ions were extracted by the sorbent [Table 2]

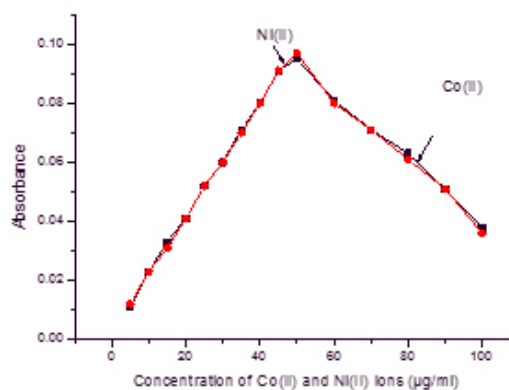


Fig. 9: Job's continuous variation method

Table 1: Physical and Analytical Characteristics of Co (II) & Ni (II) - NDHBDED Complexes

Parameters	Value	
	Co (II)	Ni (II)
Molar absorbance (λ_{max})	445 nm	508 nm
Limit of Detection (µg/ ml)	0.1-1.0	0.1-1.0
Beer's law range	5-100 µg/ ml	5-100 µg/ ml
Molar absorptivity	$1.351 \times 10^{-4} \text{ L mol}^{-1} \text{ cm}^{-1}$	$1.925 \times 10^{-4} \text{ L mol}^{-1} \text{ cm}^{-1}$
Stability Constant (β)	3.39×10^7	3.92×10^7
pH	4.5	5.0
Temperature	35°C	35°C
Standard deviation	0.156	0.215
Composition (Metal:Ligand)	1:1	1:1
Sandell's Sensivity	0.005 µg/ cm^2	0.004 µg/ cm^2
Magnetic Moment (μ_{eff})	3.82 BM	2.82 BM

The Stoichiometry of the Co (II) and Ni (II) – NDHBDED Mole-Ratio method

The stoichiometry of Co (II) and Ni (II) – NDHBDED complex was determined by Mole-Ratio method and Job's method of continuous variation at fixed absorbance λ_{\max} 500 nm.

The extractions of the metal ions were carried out in the range of 0.1 to 1.0 mg of the reagent concentration. The natures of the curves were straight line for both the metal ions which predicting

Table 2: Effect of Co (II) and Ni (II) ions concentration on the percentage extraction of the solid sorbent matrix at pH 5.0 at room temperature

Used ($\mu\text{g}/\text{ml}$)	Co (II)			Used ($\mu\text{g}/\text{ml}$)	Ni (II)		
	Extracted ($\mu\text{g}/\text{ml}$)	% E	% RSD		Extracted ($\mu\text{g}/\text{ml}$)	% E	% RSD
5	2.5	50	0.13	5	2.4	48	0.11
10	6.2	62	0.11	10	6.1	61	0.21
15	10.8	72	0.13	15	10.9	72.66	0.12
20	14.8	74	0.11	20	14.7	73.5	0.08
25	20.7	82.8	0.12	25	20.6	82.4	0.15
30	25.12	83.73	0.13	30	24.92	83.06	0.13
35	30.88	88.22	0.09	35	31.83	90.94	0.14
40	35.80	89.2	0.08	40	34.88	87.2	0.12
45	40.60	90.22	0.11	45	41.50	92.22	0.07
50	46.12	92.24	0.14	50	44.92	89.84	0.15
60	54.1	90.16	0.09	60	55.0	91.66	0.16
70	64.3	91.85	0.08	70	63.1	90.14	0.09
80	73.5	91.87	0.11	80	72.5	90.62	0.12
90	82.3	91.44	0.1	90	81.1	90.11	0.16
100	88.6	88.6	0.12	100	89.6	89.6	0.11

Table 3: Separation of 1 $\mu\text{g}/\text{ml}$ each of Co (II) and Ni (II) from binary mixtures in a sample volume of 50 ml

Ions	Amount (mg)	% Recovery		Ions	Amount (mg)	% Recovery	
		Co (II)	Ni (II)			Co (II)	Ni (II)
Na ⁺	5	88.5	89.5	Cl ⁻	5	88.9	89.2
K ⁺	5	88.7	88.8	Br ⁻	5	89.6	88.6
Cd ²⁺	5	86.9	89.7	SO ₄ ²⁻	5	90.2	89..5
Ca ²⁺	5	87.8	89.1	ClO ₃ ⁻	5	91.1	88.6
Mg ²⁺	5	88.6	89.5	NO ₃ ⁻	5	89.2	88.2
Ba ³⁺	2.5	91.1	88.6	CO ₃ ²⁻	2.5	88.7	89.3
Cr ³⁺	2.5	90.2	88.8	Cr ₂ O ₇ ⁻	2.5	87.7	86.8
Sn ²⁺	2.5	90.3	87.9	SO ₃ ²⁻	2.5	91.7	88.8
Fe ³⁺	2.5	89.3	90.2	CH ₃ COO ⁻	2.5	91.01	90.1
Al ³⁺	2.5	89.1	92.2	F ⁻	2.5	89.02	90.2
Zn ²⁺	2.5	83	81.6	NO ₂ ⁻	2.5	90.01	92.0
Pb ²⁺	2.5	85.7	81	CN ⁻	2.5	87.7	89.9

Table 4: Desorption of Co (II) and Ni (II) by different eluents

Eluents	% Recovery	
	Co (II)	Ni (II)
1 M HCl	72	73
2 M HCl	69	71
3 M HCl	75	76
1 M HNO ₃	85	82
2 M HNO ₃	87	86
3 M HNO ₃	90	91
3 M CH ₃ COOH	45	65
3 M H ₂ C ₂ O ₄	60	63

the nature of the complexes are 1:1. The results are shown in Fig.8.

Job's method of continuous variation

For a fixed of the reagent concentration (0.5 mg/ml) with different concentration of the metal ions in the range of 5 – 100 µg/ml were studied. The natures of the curves predicting the nature of the complexes are 1:1. The results are shown in Fig.9.

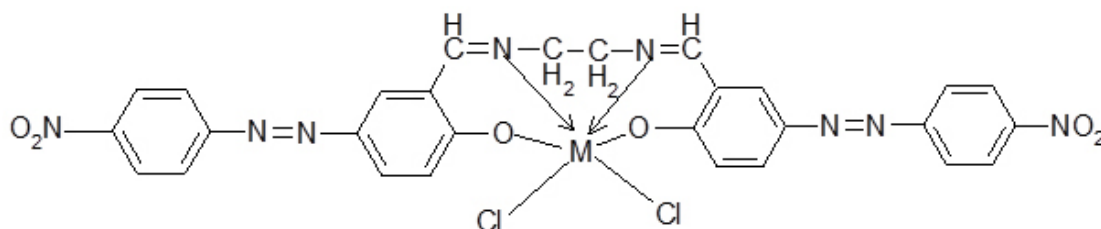
Effects of foreign ions

As evident from [Table 3], in the solid phase spectrophotometric determination of Co (II) and Ni (II), the presence of macro amounts of foreign ions

Table 5: Determination of Co (II) and Ni (II) in real samples and tap water

Samples	Certified Value (µg/g)	Proposed method (µg/g)	% RSD
Tube Wells Water	Co (II) : 0.64	0.71	0.03
	Ni (II) : 0.20	0.35	1.0
Tap water	Co (II) : 0.15	0.20	0.06
	Ni (II) : 0.25	0.32	0.07
Soil	Co (II) : 0.05	0.07	0.08
	Ni (II) : 0.05	0.09	0.03

The proposed structure of metal-ligand complexes



M = Co(II) and Ni(II)

did not interfere in the sorption process. Only Zn (II) and Pb (II) interfere in very minute level. The results are presented in [Table 3].

Effects of eluting agents on desorption of Co (II) and Ni (II)

Various volumes of different eluents were applied for desorption of Co (II) and Ni (II) under optimum conditions. In this report 2-3M HNO₃ was

used as a general eluent that led to satisfactory results. Various volumes of HNO₃ were used for extraction of each metal ions and it was found to increase by increasing its volumes. The results are shown in [Table 4].

Analytical application

The application of the proposed method at optimum condition was applied for determination

of cobalt and nickel in various real samples and in environmental samples. The results are reported in [Table 5].

CONCLUSION

The proposed method is a selective, accurate and sensitive for the determination of Co (II) and Ni (II) ions based on complexation. The suggested method could be used for rapid determination of these two metal ions in real samples and tap water. The wide applicability and simplicity

of the proposed method make it different from other existing methods.

ACKNOWLEDGEMENT

The authors are thankful to the Department of Chemistry of the University of Burdwan, Burdwan, India for providing the necessary laboratory facilities and the authors also thankful to Dr. Aniruddha Chakraborty from Union Christian Training College, Berhampore, Mushidabad, WB, India for his immense help in carrying out this research work.

REFERENCES

- Moghami Ali, *Australian journal of Basic and Applied Sciences*, **2012**, 6(3), 349-355.
- Rahman, Md. Faridur; Chakraborty, Aniruddha; and Das, Tanmoy, *Orient. J. Chem.*, **2015**, 31(4), pg. 2401-2408.
- Rahman, M.F.; Chakraborty, A., and Das, T., *IOSR Journal of Applied Chemistry (IOSR-JAC)*, **2015**, 1, pp.14-20
- S Chauhan Jayprakash, V Pandya Ajit, *International Journal of Eng. Sc. Invent*, **2013**, 2(2)
- Rehman, F., and Mairaj, Samya, *Orient. J. Chem.*, **2012**, 28(2), pg. 881-885.
- De, Anil K, *Environmental Chemistry, Seventh Edition, New Age Int. Pub.*, **2010**, pg 248.
- Rahman, Md. Faridur; Chakraborty, Aniruddha; and Das, Tanmoy, *Material Sc. Res. India*, **2015**, 12(2) pp.95-103.
- Mukherjee, Dulal C; Chowdhury, Sumit B; Paul, Ajoy and Das, Paulomi, *J. Indian Chem. Soc.*, **2012**, 89, pp.9-18.
- Lokhande R.S., Sonawane P. Ratnamala and Chavan Utkarsha, *Int. J. Chem. Sci.*, **2012**, 10(1), 342-348.
- Moghami Ali and Shahriare Ghammamy, *Middle-East Journal of Scientific Research*, **2012**, 12(10), 1331-1338.
- Karayunlu, Seda; Ay, Umit, *J. of Anal. Chem.*, **2010**, 65, pp.244-248.
- Rustamov, N.Kh; Abbasova, G.G., *American J. Anal. Chem.*, **2014**, 5, 275-280
- Tavallali, H. and Kiani, S., *Int. Journal of ChemTech Res.*, **2012**, 4(3), pp.1182-1186.
- Rahman, M. F.; Chakraborty, A., Bandyopadhyay, S. N.; Das, T., *Golden Research Thoughts*, **2014**, Vol.III, Issue.9, pp.1-6.
- Hosaini Mehdi and Dalali Nasser, *Indian Journal Chem. Tech.*, **2012**, Vol.19, pp.337-341.
- Saritha B. and Reddy T. Sreenivasulu, *IOSR Journal of Applied Chemistry (IOSR-JAC)*, **2014**, 7(3), pp.22-26
- Gopala Krishna D, Devanna N, Chandrasekhar K. B, *Int. J Chem. Tech Res.*, **2011**, 3(1), 506-515
- Pawar R B, Padgaonkar S B and Sawant A D, *Indian J Chem. Tech.*, **2001**, Vol.8, pp.200-203.
- Menon S K, Agrawal Y K and Desai M N, *Talanta*, **1985**, 36(6), 675.
- Kumar R Kishore, Venkateswarlu S, Reddy Vijaya Kumar, Tulasamma P, Govinda V, Jyothi N V V and Venkateswarlu P, *J. Chem. Pharm. Res.*, **2011**, 3(3), pp.626-634.
- Karayunlu Seda, Ay Umit, *Journal of Anal. Chem.*, **2010**, 65(3), pp.244-248.
- Behpour Mohsen, Ghoreishi Sayed Mehdi and Salehi Sakineh, *Acta Chim. Slov.*, **2005**, 52, pp.323-327.
- Saritha B. and Reddy T. Sreenivasulu, *IOSR Journal of Applied Chemistry (IOSR-JAC)*, **2014**, 7(3), pp.22-26.
- Kumar A. Praveen, Reddy P Raveendra and Reddy V Krishna, *Indian J. of Chem.*, **2007**, Vol.46A, pp.1625-1629.
- Rahman, Md. Faridur; Chakraborty, Aniruddha; and Das, Tanmoy, *Am J. PharmTech. Res.* **2015**, 15(2), pp.496-506.