



## Dispersive Liquid-Liquid Microextraction and Determination of Platinum(IV) by High Performance Liquid Chromatography

ALI MAZLOOMIFAR and PEGAH SHIEKHI

Department of chemistry, Faculty of Science, Yadegar-e- Imam Khomieni (RAH) Branch, Islamic Azad University, Tehran, Iran

\*Corresponding author E-mail: mazloomifar@yahoo.com

<http://dx.doi.org/10.13005/ojc/310306>

(Received: May 15, 2015; Accepted: July 02, 2015)

### ABSTRACT

A simple, rapid, and efficient procedure, dispersive liquid-liquid microextraction (DLLME), has been developed for the extraction and preconcentration of platinum (IV) in environmental water samples. The factors relevant to the microextraction efficiency, such as the kind and volume of extraction and dispersive solvent, the extraction time, the pH in aqueous, and the salt effect, were optimized. Under the optimum conditions, the enrichment factor of this method for platinum was reached at 119. The detection limit for platinum was  $0.3 \text{ ng mL}^{-1}$ , and the relative standard deviation (RSD) was 0.42% ( $n = 10$ ,  $C = 10 \text{ ng mL}^{-1}$ ). The method was successfully applied to the determination of trace amounts of platinum in environmental water samples.

**Key words:** Dispersive liquid – liquid microextraction, Platinum, High performance liquid – liquid chromatography.

### INTRODUCTION

Platinum is a metal used mainly in jewelry, electrical contacts, dentistry, laboratory equipment and vehicle emission control devices. Ingestion and other exposures to the chemical can cause various symptoms. The type and severity of symptoms varies depending on the amount of chemical involved and the nature of the exposure. The toxicological effects of platinum in humans are confined to certain of its complex halide salts and to the antitumour agent cis-platin and its analogues.

The adverse health effects of the halide salt complexes are characterized by sensitization; these compounds are among the most potent sensitizers known.<sup>1,2</sup>

The analytical methods of platinum usually involves in using ICP-MS<sup>3,4</sup>, ICP-AES<sup>5</sup>, FAAS<sup>6</sup>, GFAAS<sup>7</sup>, spectrophotometric.<sup>8</sup> High performance liquid liquid chromatography (HPLC) is suitable for the determination of trace levels of platinum. However, despite its sensitivity, it is necessary to include a preconcentration step due

to the low levels present in water samples. Several methods have been developed for this, including solid-liquid extraction<sup>9-11</sup> and hollow fiber liquid phase microextraction (HF-LPME).<sup>12</sup>

In recent years, several microextraction methods involving amounts of organic solvents have been applied for preconcentration purposes: cloud point extraction<sup>13,14</sup>, single drop microextraction (SDME)<sup>15,16</sup>, homogeneous liquid-liquid microextraction (HLLME),<sup>17,18</sup> and dispersive liquid-liquid microextraction (DLLME).<sup>19-21</sup> The aim of this work is to combine DLLME with HPLC and develop a new procedure for determination of trace platinum in waters. In this method, 1-(2-pyridylazo)-2-naphthol (PAN), which forms complexes with more metal ions and has found numerous applications in separation and preconcentration by LLE<sup>22</sup>, HF-LPME<sup>23</sup>, SPE<sup>24</sup> and CPE<sup>25</sup> methods, was selected as chelating reagent. The factors influencing the efficiency of DLLME extraction and HPLC determination were studied. The procedure was successfully applied to determine trace amounts of Pt (IV) in water samples.

## MATERIALS AND METHOD

### Instrumentation

The HPLC used in this work was Agilent 1200 (Agilent technologies Co., USA) and consisted of UV-Vis photometric detector, a Zorbax Eclipse XDB-C18 column (4.6 mm diameter, 150 mm length, 5  $\mu$ m macropore size and 13 nm mesopore size) from Agilent (Agilent technologies Co., USA), was used for separation. The mobile phase was methanol - buffer optimized on (80: 20 v/v) was delivered by Agilent HPLC pump. The flow rate of the mobile phase was 0.8 mL/min and the UV-Vis photometric detection wavelength was set at 660 nm.

### Reagents and samples

Analytical reagents grade acetone, methanol, ethanol, carbon tetrachloride, acetic acid, sodium acetate, ammonium chloride, ammonia from Merck Co. (Darmstadt, Germany). These compounds were all HPLC grade. 1-(2-pyridylazo)-2-naphthol (PAN) and hexachloroplatinic acid ( $H_2PtCl_6 \cdot 6H_2O$ ) were obtained from Merck Co. (Darmstadt, Germany).

A platinum standard solution (1000 mg L<sup>-1</sup>) was prepared from  $H_2PtCl_6 \cdot 6H_2O$  in pure water, from which working standard solutions were obtained by dilution. The 1.0 mol L<sup>-1</sup> solution of PAN was prepared by dissolving the compound in ethanol. Working standard solutions were obtained by dilution with water.

Buffer solution 0.1 mol L<sup>-1</sup> of acetate-acetic acid and 0.1 mol L<sup>-1</sup> of ammonium chloride-ammonia were used for the experiment.

### General procedure

100  $\mu$ L of a 1.0 mmol L<sup>-1</sup> PAN solution and 1 mL of acetate-acetic acid buffer solution were added to a 10 mL glass tube containing 5 mL of a sample solution of platinum (10 ng mL<sup>-1</sup>). To this solution, acetone (600  $\mu$ L) as a dispersive solvent containing 60  $\mu$ L carbon tetrachloride as an extraction solvent was rapidly injected into the solution using a syringe. A cloudy solution (water/acetone/carbon tetrachloride) was formed in the extraction vessel. In this step, the platinum-PAN complex in water sample was extracted into the fine droplets of carbon tetrachloride. The mixture was then centrifuged for 5 min at 4000 rpm. After this process, the dispersed fine droplets of carbon tetrachloride were collected in the bottom of the tube (42  $\mu$ L). Using a chromatographic syringe, 20  $\mu$ L of this sedimented phase were injected into HPLC.

## RESULTS AND DISCUSSION

### Optimization method

Parameters and practical considerations affecting the DLLME procedure are as follows.

### Effect of pH value

The effect of pH value in aqueous phase on the extraction is examined and shown in Fig. 1. In the pH range from 3-6, maximum extraction of platinum occurs and the peak area is found to be constant. An acetate-acetic acid buffer of pH 4.70 is employed for the following experiments.

### Effect of PAN concentration

PAN was a good chelating agent for platinum extraction. Enough PAN was needed to assure that platinum would be extracted completely.

**Table 1: Quantitative characteristic of the presented method**

Calibration curve equation	LOD (ng/mL)	LOQ (ng/mL)	Linear dynamic range (ng/mL)	Square of correlation coefficient ( $r^2$ )	Preconcentration factor
A=1067.3C + 11240	0.3	1.0	1.0 - 100	0.997	119

**Table 2: Effect of coexisting ions**

Coexisting ions	Concentration ratio	Enrichment (RSD%)
Na <sup>+</sup>	1000	98(0.45)
K <sup>+</sup>	1000	98.5(0.95)
Ca <sup>2+</sup>	1000	97.0(1.2)
Mg <sup>2+</sup>	1000	94.4( 1.8)
Ag <sup>+</sup>	500	96.2(2.2)
Zn <sup>2+</sup>	200	102(2.6)
Cu <sup>2+</sup>	300	94.3(1.7)
Cd <sup>2+</sup>	100	92.2(2.2)
Cl <sup>-</sup>	1000	103(2.5)
SO <sub>4</sub> <sup>2-</sup>	500	97( 1.2)
NO <sub>3</sub> <sup>-</sup>	1000	98.0(1.1)

Therefore, concentration of PAN was investigated between 0.10 mmol L<sup>-1</sup> - 2.0 mmol L<sup>-1</sup>. Fig. 2 exhibited that when the concentration of PAN was up of 0.80 mmol L<sup>-1</sup>, platinum would be extracted completely, and with the increase further of the PAN concentration, the extraction efficiency had no significant increase. Therefore, 1.0 mmol L<sup>-1</sup> of PAN was used in the subsequent experiments.

#### Selection of the extraction solvent

The selection of an appropriate solvent is a major factor for DLLME. It should be higher density than water and have extraction capability of the interested compounds and low solubility in water. In this study, chloroform (CHCl<sub>3</sub>), dichloromethane (CH<sub>2</sub>Cl<sub>2</sub>), carbon tetrachloride (CCl<sub>4</sub>), and carbon

**Table 3: The results from real water samples.**

Environmental samples	Spiked (ng/mL)	Recovery% (RSD%)
Tap water	-10.0	<LOD95.3(1.30)
Waste water	-10.0	<LOD93.0 ( 2.62)

disulfide (CS<sub>2</sub>) were selected extraction solvents. A series of sample solutions was extracted by using 1.0 mL methanol involving 100 μL of each extraction solvent. The results illustrated in Fig.3 indicated that maximum extraction occurs by using carbon tetrachloride. Carbon tetrachloride was selected for the further studies.

#### Selection of the dispersive solvent

In DLLME procedure, the kind of dispersive solvent plays an important role in enrichment of analytes. Miscibility of a disperser with organic phase and aqueous phase is the most important point for the selection of dispersive solvent. Therefore, methanol, acetone, acetonitrile, and ethanol, which have this ability. Using 1.0 mL of

each dispersive solvent containing 100 μL carbon tetrachloride as an extraction solvent. The results were exhibited in Fig. 4. As can be seen, maximum extraction of platinum occurs by using acetone. Therefore, acetone is selected as a dispersive solvent in the following studies.

#### Effect of the extraction solvent volume

To examine the effect of the extraction solvent volume, experiments involving different volumes of carbon tetrachloride were done with the same DLLME procedure. The experimental conditions were fixed; 1.0 mL acetone containing different volumes of CCl<sub>4</sub> ( 40, 50, 60, 70, 80, 90 and 100 μL). Fig.5 depicts the extraction efficiency versus volume of extraction solvent for target

analyte. As can be seen, the peak areas increased with the increasing volume of extraction solvent from 40  $\mu\text{L}$  to 60  $\mu\text{L}$ . The increase of peak areas were due to the increase of volume of carbon tetrachloride which can dissolve more platinum complex. The peak areas decreased with increasing volume of extraction of 60  $\mu\text{L}$  to 100  $\mu\text{L}$ . This decrease may be due to the dilution effect of increased  $\text{CCl}_4$  volumes. Therefore, 60  $\mu\text{L}$  carbon tetrachloride was used.

#### Effect of dispersive solvent volume

In DLLME procedure, the volume of dispersive solvent is another important factor to be considered. To study the effect of dispersive volume on the extraction efficiency, all experimental conditions were fixed except volume of acetone (0.10, 0.20, 0.30, 0.40, 0.50, 0.60, 0.70, 0.80, 0.90 and 1.0 mL) containing 60  $\mu\text{L}$   $\text{CCl}_4$ ). The results were exhibited in Fig. 6. When the volume of acetone was small, carbon tetrachloride could not be

dispersed completely and cloudy solution could not form. On the other hand, in the high volumes of acetone (over 600  $\mu\text{L}$ ), solubility of platinum complex in water increases, therefore, the extraction efficiency decreased because of distribution coefficient decreasing. A 600  $\mu\text{L}$  volume was chosen as an optimum volume for disperser.

#### Effect of the extraction time

In this experiment, extraction time was another parameter for DLLME procedure. The effect of extraction time was examined in the range of 2 – 20 min while the other experimental conditions remained constant. The results are shown in Fig. 7. According to the obtained results, extraction efficiency of platinum increased when the extraction time was changed from 2 to 8 min. But after 8 min, the efficiency showed not changing. The optimized extraction time was 8 min.

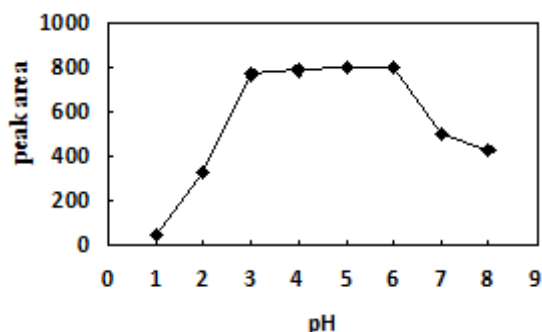


Fig. 1: Effect of pH on the peak area of platinum

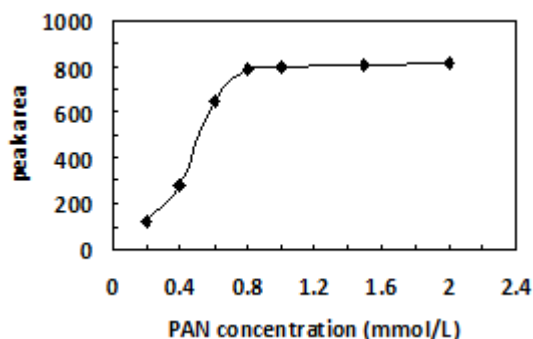


Fig. 2: Effect of PAN concentration on the peak area of platinum

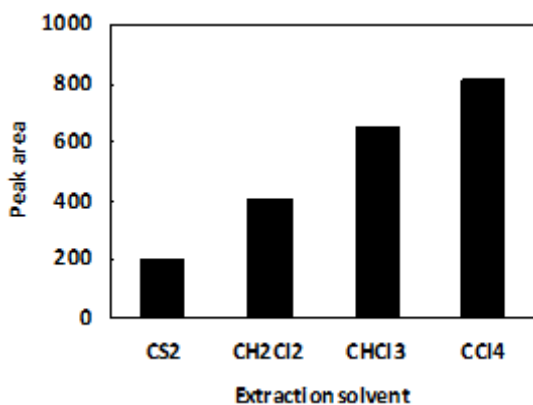


Fig. 3: Effect of various extraction solvents on the peak area of platinum

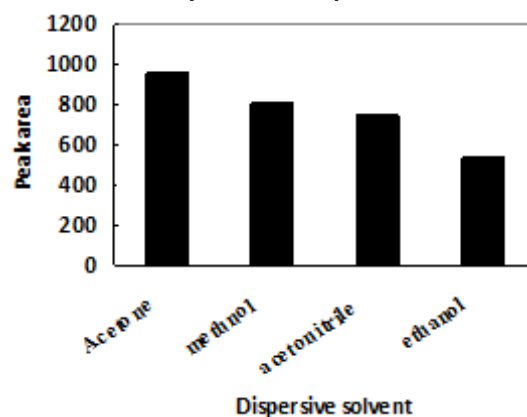


Fig. 4: Effect of various dispersive solvents on the peak area of platinum

### Effect of the centrifugation time

The centrifugation time was optimized between 1 to 10 min. The results were exhibited in Fig. 8. According to the obtained results, extraction efficiency of platinum increased when the centrifugation time was changed from 1 to 5 min. But after 5 min, the efficiency showed not changing. A 5 min time was chosen as an optimum centrifugation time.

### Effect of Salt

The effect of increasing ionic strength of aqueous phase on the performance of DLLME was investigated by adding NaCl (0 – 10% w/v) into the sample while the other conditions were kept constant. The results are presented in Fig. 9. The results showed that salt addition has no considerable effect on the extraction efficiency. Hence the further studies were performed in the absence of salt.

### Analytical performance

The analytical performance of DLLME

coupled with HPLC for the preconcentration and determination of platinum from environmental samples was systematically investigated under optimized experimental conditions. The calibration curves equations in Table 1 were obtained under the optimized conditions. Linearity was observed over the range 1.0 – 100 ng mL<sup>-1</sup> ( $r^2=0.997$ ). The linear range (LR) was obtained by generally accept manner in which the lower limit of the LR is LOQ (S/N=10) and the upper limit is a concentration in which 5% deviation from the linear status is observed. The precision of this method was 0.42% (RSD, n=10) at spiked concentration of 5 ng mL<sup>-1</sup>. The detection limit, based on S/N of 3, for platinum was 0.3 ng mL<sup>-1</sup>. The enrichment factor of proposed method for platinum was 119-fold.

### Effect of coexisting ions

The one of the main problem in the determination of the heavy metal ions is interference from matrix components. Therefore, a series of experiments have been designed using a standard solution of 10 ng mL<sup>-1</sup> platinum under the above

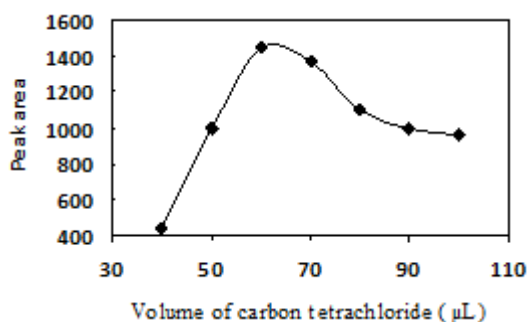


Fig. 5: Effect of the volume of carbon tetrachloride on the peak area of platinum

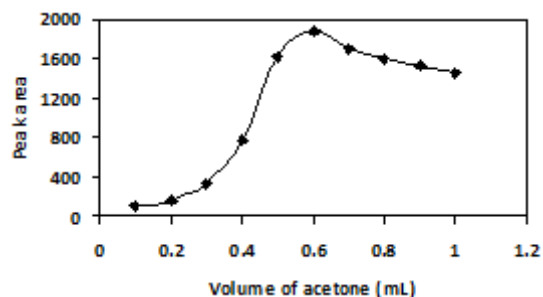


Fig. 6: Effect of acetone volume on the peak area of platinum

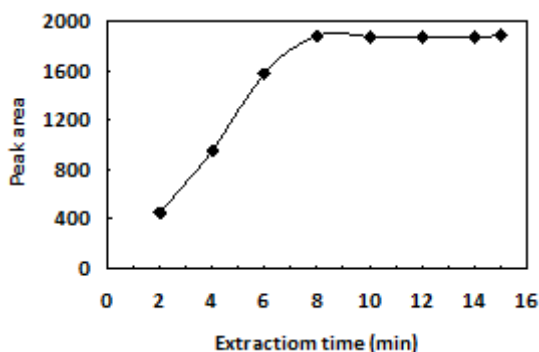


Fig. 7: Effect of the extraction time on the peak area of platinum

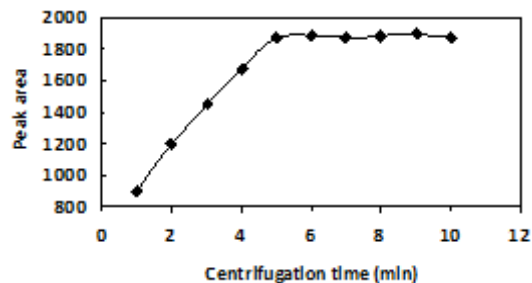


Fig. 8: Effect of the centrifugation time on the peak area of platinum

optimized conditions. The results were given in table 2. The obtained results indicated that the presence of large amounts of cation and anion including  $\text{Na}^+$ ,  $\text{K}^+$ ,  $\text{Mg}^{2+}$ ,  $\text{Ca}^{2+}$ ,  $\text{NO}_3^-$ , and  $\text{SO}_4^{2-}$  had no obvious influence on the preconcentration of the platinum.

#### Analysis of real water samples

The method was applied on tap water and waste water for the trace determination of platinum (IV). The results were given in table 3.

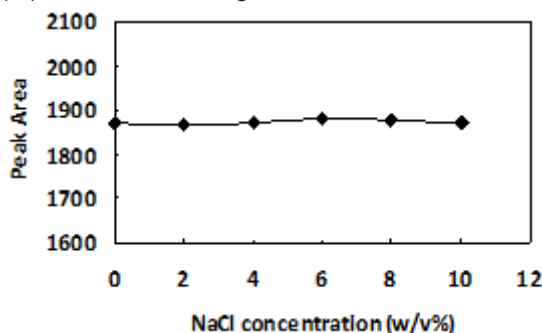


Fig. 9: Effect of salt on the peak area of platinum

#### CONCLUSIONS

The present work has demonstrated that DLLME may be utilized for the extraction of platinum from water sample. DLLME coupled with HPLC was successfully applied to the determination of platinum (IV) in water sample. In comparison with other microextraction methods and according to the obtained results, this extraction technique requires very little aqueous sample solution, organic solvent. In addition to above mentioned advantages of DLLME, it does not require special approaches and so it is very simple, rapid, and easy to use.

#### ACKNOWLEDGEMENT

The author the research council at Yadegar-e – Imam Khomeini (RAH) Branch, Islamic Azad University for financial support.

#### REFERENCES

- Hunter, D.; Milton, R.; Perry, KMA. *Br J Id Med.* **1945**, *2*, 2–98.
- Ward, J.M.; et al. *Cancer treatment reports* **1976**, *60*, 1675–1678.
- Perry, B.J.; R.E. Balazs, R.E. *Anal. Proc.* **1994**, *31*, 269-271.
- Dai, X.; Koeberl, C.; Froschl, H. *Anal. Chim. Acta* **2002**, *1436*, 79–85.
- Kovacheva, P.; Djingova, R. *Anal. Chim. Acta* **2002**, *464*, 7–13.
- Merdivan, M.; Aygün, R. S. ; Külcü, N. *Atomic spectroscopy* **1997**, *18*, 122-126.
- Bosch Ojeda, C.; Sanchez Rojas, F.; Cano Pavon, J.M. *Food Control* **2006**, *17*, 365-369.
- Johnson, L.D.; Ayres, G. H. *Anal. Chem.* **1966**, *38*, 1218-1221.
- Gao, J.; Hu, G.; Kang, J.; Bai, G. *Talanta* **1993**, *40*, 195–200.
- Gao, J.; Hu, G.; Kang, J.; Fan, H.; Bai, G. *Talanta*, **1994**, *41*, 541-546.
- Gao, J.; Peng, B.; Fan, H.; Kang, J.; Wang, X. *Talanta*, **1997**, *44*, pp.837-842.
- Yong, S.; Chen, Y.; Kooi Lee, T. ; Kee Lee, H. *Talanta*, **2014**, *126*, 163-169.
- Ohashi, A.; Ito, H.; Kanai, C.; Imura, H.; Ohashi, K. *Talanta*, **2005**, *65*, 525-530.
- Mustafina, A.; Elistratova, J.; Burirov, A.; Knyazeva, I.; Zairov, R.; Amirov, R.; Solovieva, S.; Konovalov, A. *Talanta*, **2006**, *68*, 863–868.
- Choi, K.; Kim, J.; Chung, DS. *Bioanalysis*, **2011**, *3*, 799-815.
- Battle, R.; Nerýin, C. *J. Chromatography A*, **2004**, *1045*, 29–35.
- Hosseini, M. H.; Asaadi, P. Rezaee, M.; Rezaei, M. R.; Pourjavi, M. R. ; Arabieh, M.; Abhari, A. A. *Chromatographia*, **2013**, *76*, 1779-1784.
- Hosseini, M. H.; Rezaee, M.; Akbarian, S.; Mizani, F.; Pourjavid, M. R.; Arabieh, M. *Anal. Chim. Acta*, **2013**, *762*, 54-60.
- Zgo<sup>3</sup>a-Grzeczekowiak, A. ; Grzeczekowiak, T. *TrAC Trends in Analytical Chemistry* **2011**, *30*, 1382–1399.
- Cabarcos, P.; Ángel Cocho, J.; Moreda, A.; Míguez, M.; Jesús Tabernero, M.; Fernández, P. ; María Bermejo, A. *Talanta*, **2013**, *111*, 189-195.
- Mazloomifar, A. *Internatioanal J. of Analytical*

- Chemistry* **2013**, *2013*, 1-4.
22. Watanabe, H.; Tanaka, H. *Microchimica Acta*, **2014**, *181*, 1455-1461.
23. Chen, H.; Han, J.; Wang, Y.; Hu, Y.; Liu, Y.; Kang, W.; Liu Y. *Microchimica Acta* **2014**, *181*, 1455-1461.
24. Narin, I.; Soylak, M. *Talanta* **2003**, *60*, 215-221.
25. Tang, AN.; Jiang, DQ.; Yan XP. *Anal. Chim. Acta* **2004**, *507*, 199-204.